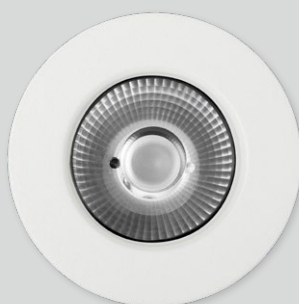
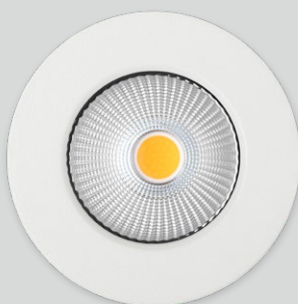


ZELA Fire Rated Fixed



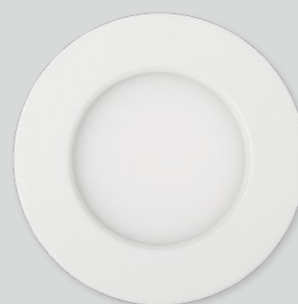
SLDF244F
Lens diffuser
Beam 9° 15° 20°
Spot lighting



SLDF242F
ULG clear glass
Beam 40° 55°
Task | General lighting



SLDF241F
Prismatic diffuser
Beam 40° 55°
General | Task lighting

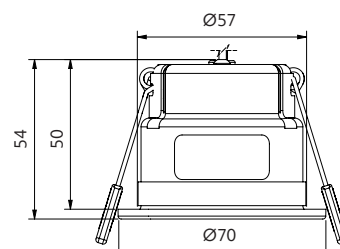


SLDF243F
Opaque diffuser
Beam 90°
Wide angle lighting



ZELA Fire Rated Fixed

- + maintain a stylish and modern appearance
- + BRANZ approved for GIB fire systems
- + compact size
- + IP65 front
- + constant current



Options

Beam angle



Lens



Honeycomb
ULG clear
Prismatic
Opaque

Trim colour



Textured
White
RAL 9016
Textured
Black
B104

CCT



3000-1850K¹ 4000-1800K²

¹Sunset Dimming is available in 30°, 40° and 55° in Professional series.
²Tunable White is available in 20°, 30°, 40°, and 55° in Art series.

CRI

Professional series (P) CRI 90-94 Art series (A) CRI 95-98

Driver included – to be specified

Phase cut Dimming
DALI 2 Tunable White
DALI 2 Dimming
SLiC Casambi Tunable White
SLiC Casambi Dimming



9-36VDC input options available
Click the QR code for low voltage driver options

Product information

Example: White, prismatic, 40°, 3000K, CRI 90, phase cut driver
Contact Switch Lighting for data of other variants

Driver (mA)	Power (W)	Delivered lumens (lm)	Insulation coverable		
			NZ	AU	UK/EU
100	4.3	420	IC-F	IC-4	✓
150	6.4	590	IC-F	IC-4	✓
180	7.7	690	IC-F	IC-4	✓
220	9.4	810	CA135	CA90	✓
260	11.1	920	Do not cover		



Size
70x50mm



Cut-out
Ø57mm



Cavity depth
>190mm*



Front

*Fire Rated downlights must not be installed into a cavity of less than 190mm as tested to AS 1530.4:2014
Refer to our website for Technical Opinion Summary on approved systems.

how to specify ZELA Fire Rated Fixed

Please confirm model option availability from our website. **Not every combination is compatible.**

e.g. code = **SLDF241F-4030P-TWD15**

Model	Beam	CCT	CRI	Trim Colour	Driver	Market
SLDF244F = Lens	09 = 9° 15 = 15° 20 = 20°	24 = 2400K 27 = 2700K 30 = 3000K 40 = 4000K	P = 90-94 A = 95-98	TW = Textured White TB = Textured Black	Phase cut Dimming D08 = 100mA (4.3W) D09 = 150mA (6.4W) D15 = 180mA (7.7W) D10 = 220mA (9.4W) D11 = 260mA (11.1W)	1 = NZ 2 = UK 3 = EU
SLDF246F = Honeycomb	30 = 30° 40 = 40°	SD = Sunset Dimming S2 = Tunable White			SLiC Casambi Tunable White D52 = 180mA (8.2W) SLiC Casambi Dimming D57 = 180mA (7.7W) D58 = 220mA (9.4W)	
SLDF242F = ULG clear glass SLDF241F = Prismatic	40 = 40° 55 = 55°				Check online for other driver options.	
SLDF243F = Opaque	90 = 90°					

Please see www.switch-lighting.co.nz for full specifications, lux levels, SDCs, ies files and installation instructions.



Warranty
7yr Luminaire
5yr Driver

L70 (60,000 h)

