

ZELA Pendant 1

décor



SLPN100F
Beam 40° 55°

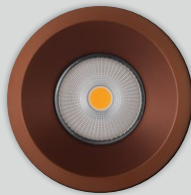
Gold inner



Copper inner



Bronze inner



White inner



Black inner



SLPN104F
Lens
Beam 9° 15° 20°
Spot lighting



SLPN106F
Honeycomb
Beam 30° 40°
Anti-glare lighting



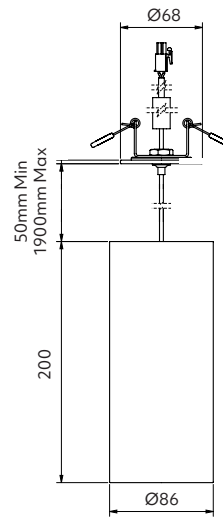
SLPN100F
Clear glass
Beam 40° 55°
Task | General lighting



SLPN101F
Prismatic
Beam 40° 55°
General | Task lighting

ZELA décor Pendant 1

- + add a touch of sophistication and visual intrigue
- + slim ceiling rose design
- + adjustable cable length
- + attractive colour options for inner
- + tunable white option
- + IP20
- + constant current

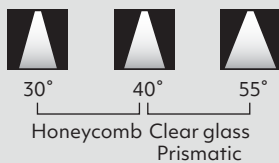


Scan to view website

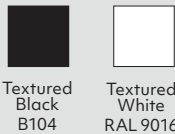


Options

Beam angle



Trim colour



Inner colour



CCT



¹ Sunset Dimming is available in 30°, 40° and 55° in Professional series.
² Tunable White is available in 20°, 30°, 40°, 55° in Art series.

CRI

Professional series (P) CRI 90-94 Art series (A) CRI 95-98

Driver included – to be specified

Phase cut Dimming
 DALI 2 Dimming
 SLiC Casambi Tunable White
 SLiC Casambi Dimming

Driver installed in ceiling behind ceiling rose.

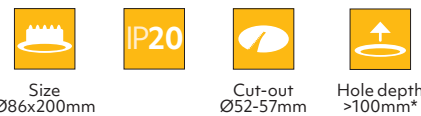
9-36VDC input options available
 Scan the QR code for low voltage driver options



Product information

Table is based on: White, prismatic, 55°, 3000K, CRI 90, phase cut driver
 Contact Switch Lighting for data of other variants

Driver (mA)	Power (W)	Delivered lumens (lm)
180	8.3	470 (9° only)
260	11.1	880



* Specification is for ceiling material ≤ 13mm with a phase cut driver.
 Required clearance to install driver through Ø52 cut-out.

How to specify ZELA décor Pendant 1

Please confirm model option availability from our website. **Not every combination is compatible.**

e.g. code = **SLPN101F-5530P-BWD11**

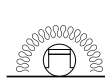
Model	Beam	CCT	CRI	Colour - Inner / Trim	Driver	Market
SLPN104F = Lens	09 = 9° 15 = 15° 20 = 20°	24 = 2400K 27 = 2700K 30 = 3000K 40 = 4000K	P = 90-94 A = 95-98	AW = Gold / White BW = Black / White CW = Copper / White DW = Bronze / White WW = White / White AB = Gold / Black BB = Black / Black CB = Copper / Black DB = Bronze / Black WB = White / Black	Phase cut Dimming D15 = 180mA (8.3W) D11 = 260mA (11.1W) DALI 2 Dimming D02 = 150mA (8.3W) D04 = 250mA (11.9W) SLiC Casambi Tunable White D54 = 260mA (11.8W) SLiC Casambi Dimming D57 = 180mA (7.7W) D59 = 260mA (11.8W) Check online for other driver options.	■ = NZ 1 = Aust 2 = UK 3 = EU
SLPN106F = Honeycomb	30 = 30° 40 = 40°	SD = Sunset Dimming S2 = Tunable White				
SLPN100F = Clear glass SLPN101F = Prismatic	40 = 40° 55 = 55°					

Please see www.switch-lighting.co.nz for full specifications, lux levels, SDoCs, ies files and installation instructions.



Warranty
 7yr Luminaire
 5yr Driver

L70 (60,000h)



CONSTANT
CC
 CURRENT

