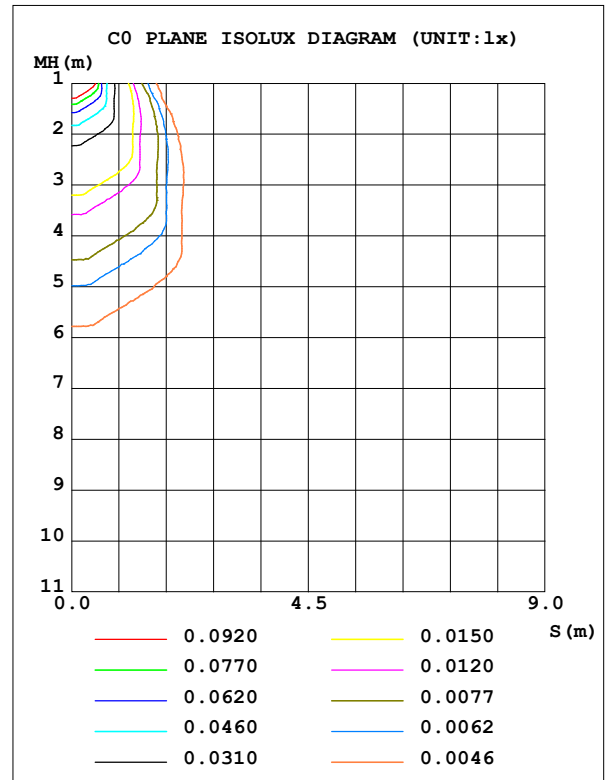
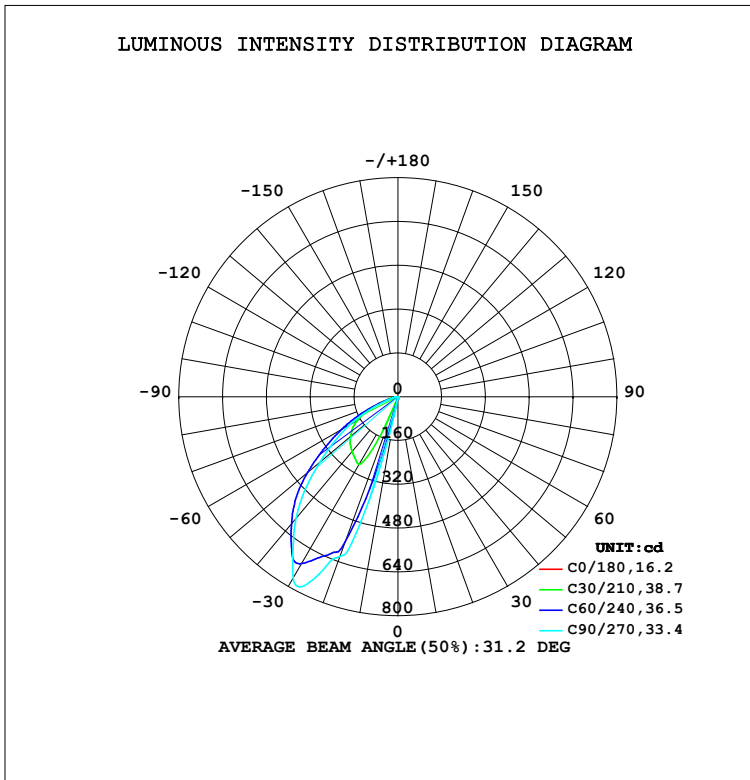


LUMINAIRE PHOTOMETRIC TEST REPORT

Test:U:229.80V I:0.0560A P:12.100W PF:0.9500 Freq:50.00Hz Lamp Flux:471.17lx1 lm		
NAME: SLCW100F-W1S2A-##D54	TYPE:	WEIGHT:
SPEC.:	DIM.:	SERIAL No.:1
MFR.: Switch Lighting	SUR.:	Shielding Angle:

DATA OF LAMP		PHOTOMETRIC DATA				Eff: 38.94 lm/W
MODEL		I <sub>max</sub> (cd)	834.0	S/MH (C0/180)	1.05	
NOMINAL POWER (W)	25	LOR (%)	100.0	S/MH (C90/270)	8.73	
RATED VOLTAGE (V)	240	TOTAL FLUX (lm)	471.17	η UP,DN (C0-180)	0.0,0.0	
NOMINAL FLUX (lm)	471.171	CIE CLASS	DIRECT	η UP,DN (C180-360)	0.0,100.0	
LAMPS INSIDE	1	η up (%)	0.0	CIBSE SHR NOM	0.00	
TEST VOLTAGE (V)	240.2	η down (%)	100.0	CIBSE SHR MAX	1.00	



C Range: 0 - 360DEG  
C Interval: 5.0DEG  
Test Speed: MEDIUM  
Temperature:25.3DEG  
Operators:Jason  
Test Date:16 November 2021

γ Range: 0 - 90DEG  
γ Interval: 0.5DEG  
Test System:EVERFINE GO-i300\_v1 SYSTEM V2.0.401  
Humidity:65.0%  
Test Distance:3.160m [K=1.0000]  
Remarks:

### ZONAL FLUX DIAGRAM

#### ZONAL FLUX DIAGRAM:

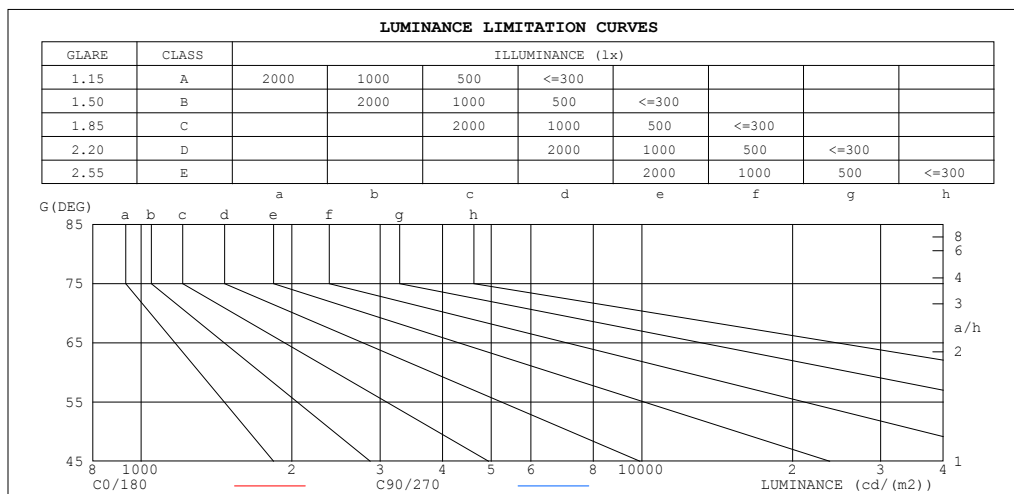
$\gamma$	C0	C45	C90	C135	C180	C225	C270	C315	$\gamma$	$\Phi$ zone	$\Phi$ total	%lum,lamp
10	0.1304	0.0561	0.0636	0.0533	0.1311	7.591	16.20	5.666	0- 10	0.1586	0.1586	0.03,0.03
20	0.1204	0.0632	0.0706	0.0534	0.1271	313.7	620.2	221.1	10- 20	18.66	18.82	3.99,3.99
30	0.0869	0.0595	0.0326	0.0533	0.0894	536.3	766.0	391.1	20- 30	80.64	99.46	21.1,21.1
40	0.0598	0.0486	0.0141	0.0385	0.0733	512.5	579.1	369.8	30- 40	113.3	212.7	45.1,45.1
50	0.0403	0.0207	0	0.0237	0.1164	427.7	371.7	316.3	40- 50	110.1	322.9	68.5,68.5
60	0.0282	0.0069	0	0.0098	0.3418	282.2	199.6	215.1	50- 60	86.16	409.0	86.8,86.8
70	0.0174	0.0052	0	0.0053	0.1632	115.8	53.32	87.24	60- 70	47.45	456.5	96.9,96.9
80	0.0067	0	0	0.0019	0.0584	18.58	9.470	14.30	70- 80	12.65	469.1	99.6,99.6
90	0	0	0	0	0.0249	2.182	3.674	1.586	80- 90	2.066	471.2	100,100
100									90-100			
110									100-110			
120									110-120			
130									120-130			
140									130-140			
150									140-150			
160									150-160			
170									160-170			
180									170-180			
DEG	LUMINOUS INTENSITY:cd									UNIT:lm		

C Range: 0 - 360DEG  
C Interval: 5.0DEG  
Test Speed: MEDIUM  
Temperature:25.3DEG  
Operators:Jason  
Test Date:16 November 2021

$\gamma$  Range: 0 - 90DEG  
 $\gamma$  Interval: 0.5DEG  
Test System:EVERFINE GO-i300\_v1 SYSTEM V2.0.401  
Humidity:65.0%  
Test Distance:3.160m [K=1.0000]  
Remarks:

LUMINANCE LIMITATION CURVES

Test:U:229.80V I:0.0560A P:12.100W PF:0.9500 Freq:50.00Hz Lamp Flux:471.17lx1 lm		
NAME: SLCW100F-W1S2A-##D54	TYPE:	WEIGHT:
SPEC.:	DIM.:	SERIAL No.:1
MFR.: Switch Lighting	SUR.:	Shielding Angle:



LUMINANCE cd/(m2)		
G (DEG)	C0/180	C90/270
85	1	0
80	3	0
75	3	0
70	4	0
65	5	0
60	5	0
55	5	0
50	5	0
45	6	1

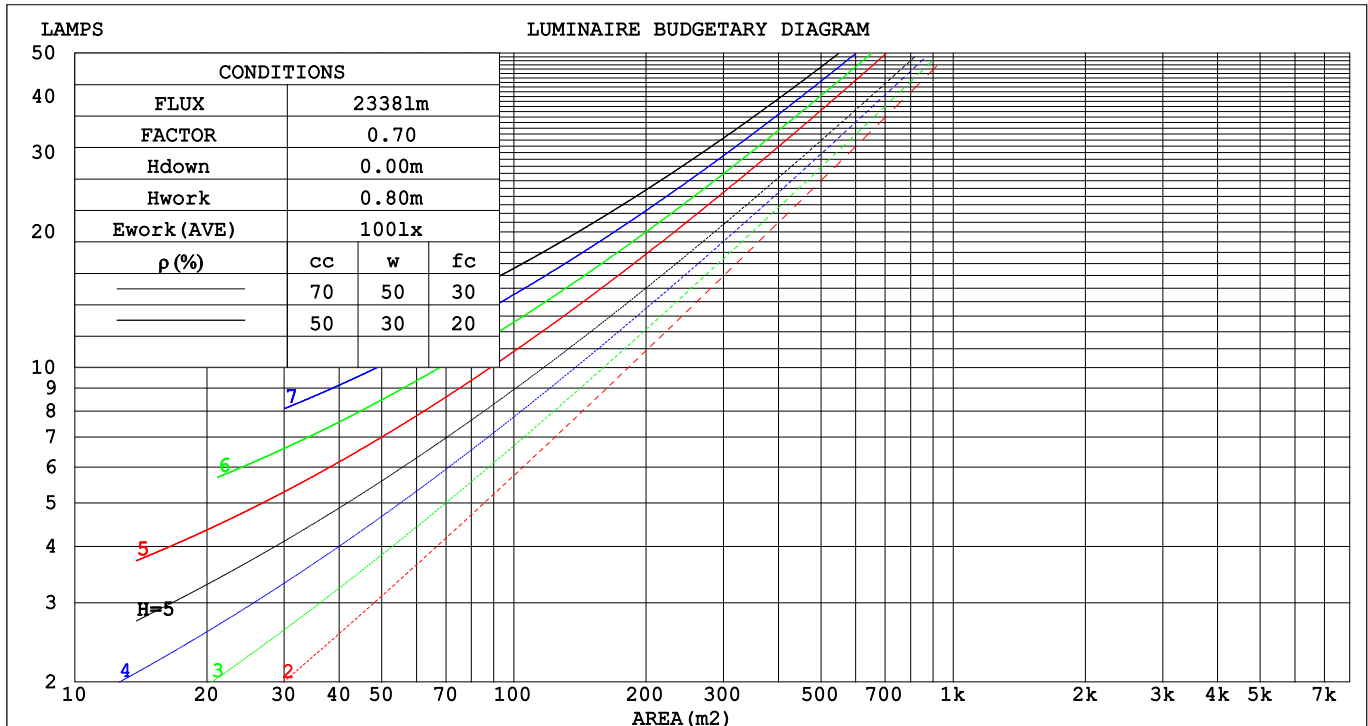
C Range: 0 - 360DEG  
 C Interval: 5.0DEG  
 Test Speed: MEDIUM  
 Temperature:25.3DEG  
 Operators:Jason  
 Test Date:16 November 2021

γ Range: 0 - 90DEG  
 γ Interval: 0.5DEG  
 Test System:EVERFINE GO-i300\_V1 SYSTEM V2.0.401  
 Humidity:65.0%  
 Test Distance:3.160m [K=1.0000]  
 Remarks:

## CU AND LUMINAIRE BUDGETARY ESTIMATE DIAGRAM

Test:U:229.80V I:0.0560A P:12.100W PF:0.9500 Freq:50.00Hz Lamp Flux:471.17lx1 lm		
NAME: SLCW100F-W1S2A-##D54	TYPE:	WEIGHT:
SPEC.:	DIM.:	SERIAL No.:1
MFR.: Switch Lighting	SUR.:	Shielding Angle:

pcc	80%			70%			50%			30%			10%			0														
pw	50%	30%	10%	50%	30%	10%	50%	30%	10%	50%	30%	10%	50%	30%	10%	0														
pfc	20%			20%			20%			20%			20%			0														
RCR	RCR:Room Cavity Ratio															Coefficients of Utilization(CU)														
0.0	1.19	1.19	1.19	1.16	1.16	1.16	1.11	1.11	1.11	1.06	1.06	1.06	1.02	1.02	1.02	1.00														
1.0	1.05	1.02	.98	1.03	.90	.96	.99	.96	.93	.95	.93	.91	.92	.90	.88	.86														
2.0	.92	.86	.80	.90	.84	.79	.87	.82	.78	.84	.80	.76	.81	.77	.74	.72														
3.0	.81	.73	.67	.79	.72	.66	.76	.70	.65	.74	.68	.64	.71	.66	.63	.60														
4.0	.71	.62	.56	.70	.62	.55	.67	.60	.55	.65	.59	.54	.63	.57	.53	.51														
5.0	.63	.54	.47	.62	.53	.47	.60	.52	.46	.58	.51	.46	.56	.50	.45	.43														
6.0	.56	.47	.40	.55	.46	.40	.53	.45	.40	.51	.45	.39	.50	.44	.39	.37														
7.0	.50	.41	.35	.49	.41	.35	.48	.40	.34	.46	.39	.34	.45	.38	.34	.32														
8.0	.45	.36	.30	.44	.36	.30	.43	.35	.30	.42	.35	.30	.40	.34	.29	.27														
9.0	.41	.32	.26	.40	.32	.26	.39	.31	.26	.38	.31	.26	.37	.30	.26	.24														
10.0	.37	.29	.23	.36	.28	.23	.35	.28	.23	.34	.28	.23	.33	.27	.23	.21														



C Range: 0 - 360DEG  
C Interval: 5.0DEG  
Test Speed: MEDIUM  
Temperature:25.3DEG  
Operators:Jason  
Test Date:16 November 2021

γ Range: 0 - 90DEG  
γ Interval: 0.5DEG  
Test System:EVERFINE GO-i300\_v1 SYSTEM V2.0.401  
Humidity:65.0%  
Test Distance:3.160m [K=1.0000]  
Remarks:

### WEC AND CCEC

Test:U:229.80V I:0.0560A P:12.100W PF:0.9500 Freq:50.00Hz Lamp Flux:471.17lx1 lm																	
NAME: SLCW100F-W1S2A-##D54									TYPE:						WEIGHT:		
SPEC.:									DIM.:						SERIAL No.:1		
MFR.: Switch Lighting									SUR.:						Shielding Angle:		

pcc	80%			70%			50%			30%			10%			0
pw	50%	30%	10%	50%	30%	10%	50%	30%	10%	50%	30%	10%	50%	30%	10%	0
pfc	20%			20%			20%			20%			20%			0
RCR	RCR:Room Cavity Ratio						Wall Exitance Coefficients(WEC)									
0.0																
1.0	.279	.159	.050	.272	.155	.049	.259	.149	.048	.247	.143	.046	.236	.137	.044	
2.0	.274	.150	.046	.268	.148	.045	.256	.143	.044	.246	.138	.043	.236	.133	.042	
3.0	.260	.139	.042	.255	.137	.041	.245	.133	.040	.235	.129	.040	.227	.125	.039	
4.0	.245	.127	.037	.240	.126	.037	.231	.123	.037	.223	.120	.036	.215	.117	.036	
5.0	.230	.117	.034	.226	.116	.034	.218	.113	.033	.210	.111	.033	.203	.108	.033	
6.0	.216	.108	.031	.212	.107	.031	.204	.105	.030	.198	.103	.030	.191	.101	.030	
7.0	.202	.100	.028	.199	.099	.028	.192	.097	.028	.186	.095	.028	.180	.094	.028	
8.0	.190	.093	.026	.187	.092	.026	.181	.091	.026	.176	.089	.026	.170	.088	.025	
9.0	.179	.087	.024	.176	.086	.024	.171	.085	.024	.166	.083	.024	.161	.082	.024	
10.0	.169	.081	.022	.166	.080	.022	.162	.079	.022	.157	.078	.022	.153	.077	.022	

pcc	80%			70%			50%			30%			10%			0	
pw	50%	30%	10%	50%	30%	10%	50%	30%	10%	50%	30%	10%	50%	30%	10%	0	
pfc	20%			20%			20%			20%			20%			0	
RCR	RCR:Room Cavity Ratio						Ceiling Cavity Exitance Coefficients (CCEC)										
0.0	.190	.190	.190	.163	.163	.163	.111	.111	.111	.064	.064	.064	.020	.020	.020		
1.0	.178	.156	.137	.152	.134	.118	.104	.092	.081	.060	.053	.047	.019	.017	.015		
2.0	.170	.132	.100	.145	.114	.087	.100	.079	.060	.057	.046	.035	.018	.015	.012		
3.0	.163	.114	.076	.139	.099	.066	.096	.068	.046	.055	.040	.027	.018	.013	.009		
4.0	.156	.101	.059	.134	.087	.051	.092	.061	.036	.053	.036	.021	.017	.012	.007		
5.0	.149	.091	.047	.128	.078	.041	.088	.055	.029	.051	.032	.017	.016	.010	.006		
6.0	.143	.082	.039	.123	.071	.034	.085	.050	.024	.049	.029	.014	.016	.010	.005		
7.0	.137	.076	.033	.118	.066	.029	.081	.046	.020	.047	.027	.012	.015	.009	.004		
8.0	.131	.070	.028	.113	.061	.025	.078	.043	.017	.045	.025	.010	.015	.008	.003		
9.0	.125	.065	.025	.108	.057	.021	.075	.040	.015	.043	.023	.009	.014	.008	.003		
10.0	.120	.061	.022	.103	.053	.019	.072	.037	.014	.042	.022	.008	.014	.007	.003		

C Range: 0 - 360DEG  
C Interval: 5.0DEG  
Test Speed: MEDIUM  
Temperature:25.3DEG  
Operators:Jason  
Test Date:16 November 2021

γ Range: 0 - 90DEG  
γ Interval: 0.5DEG  
Test System:EVERFINE GO-i300\_V1 SYSTEM V2.0.401  
Humidity:65.0%  
Test Distance:3.160m [K=1.0000]  
Remarks:

### UGR(Unified Glare Rating) Table

Test:U:229.80V I:0.0560A P:12.100W PF:0.9500 Freq:50.00Hz Lamp Flux:471.17lx1 lm											
NAME: SLCW100F-W1S2A-##D54					TYPE:			WEIGHT:			
SPEC.:					DIM.:			SERIAL No.:1			
MFR.: Switch Lighting					SUR.:			Shielding Angle:			
ceiling/cavity	0.7	0.7	0.5	0.5	0.3	0.7	0.7	0.5	0.5	0.3	
walls	0.5	0.3	0.5	0.3	0.3	0.5	0.3	0.5	0.3	0.3	
working plane	0.2	0.2	0.2	0.2	0.2	0.2	0.2	0.2	0.2	0.2	
Room dimensions		Viewed crosswise					Viewed endwise				
x = 2H y = 2H		-31.9	-30.4	-31.7	-30.2	-30.0	-40.0	-38.5	-39.8	-38.3	-38.1
	3H	-30.5	-29.1	-30.2	-28.8	-28.6	-40.2	-38.8	-39.9	-38.6	-38.4
	4H	-30.0	-28.7	-29.7	-28.5	-28.2	-40.4	-39.0	-40.0	-38.8	-38.5
	6H	-29.8	-28.5	-29.5	-28.3	-28.0	-40.5	-39.2	-40.1	-38.9	-38.7
	8H	-29.8	-28.6	-29.4	-28.3	-28.0	-40.5	-39.3	-40.2	-39.0	-38.7
	12H	-29.8	-28.6	-29.4	-28.4	-28.0	-40.6	-39.4	-40.2	-39.1	-38.8
4H	2H	-32.0	-30.7	-31.7	-30.4	-30.2	-38.4	-37.1	-38.1	-36.8	-36.6
	3H	-30.2	-29.0	-29.8	-28.7	-28.4	-38.5	-37.4	-38.2	-37.1	-36.8
	4H	-29.5	-28.5	-29.1	-28.1	-27.8	-38.6	-37.6	-38.2	-37.2	-36.9
	6H	-29.1	-28.2	-28.7	-27.8	-27.5	-38.7	-37.8	-38.3	-37.4	-37.1
	8H	-29.0	-28.2	-28.6	-27.8	-27.4	-38.7	-37.9	-38.3	-37.5	-37.1
	12H	-29.0	-28.2	-28.6	-27.9	-27.5	-38.8	-38.0	-38.3	-37.6	-37.2
8H	4H	-29.5	-28.6	-29.1	-28.3	-27.9	-37.1	-36.3	-36.7	-35.9	-35.6
	6H	-28.9	-28.2	-28.4	-27.8	-27.4	-37.2	-36.5	-36.8	-36.1	-35.7
	8H	-28.7	-28.1	-28.3	-27.7	-27.2	-37.3	-36.6	-36.8	-36.2	-35.8
	12H	-28.7	-28.1	-28.2	-27.7	-27.2	-37.3	-36.8	-36.8	-36.3	-35.9
12H	4H	-29.5	-28.8	-29.1	-28.4	-28.0	-36.8	-36.0	-36.4	-35.6	-35.2
	6H	-28.9	-28.3	-28.5	-27.9	-27.4	-36.8	-36.2	-36.4	-35.8	-35.3
	8H	-28.7	-28.2	-28.2	-27.8	-27.3	-36.8	-36.3	-36.4	-35.9	-35.4
Variations with the observer position at spacings:											
S = 1.0H	+ 1.2 / - 0.5					+ 2.0 / - 3.0					
1.5H	+ 1.1 / - 1.0					+ 3.6 / - 2.8					
2.0H	+ 2.0 / - 1.3					+ 1.3 / - 2.2					

CIE Pub.117, 471.2 lm Total Lamp Luminous Flux Correct ( $8\log(F/F_0) = -2.6$ )

C Range: 0 - 360DEG  
C Interval: 5.0DEG  
Test Speed: MEDIUM  
Temperature:25.3DEG  
Operators:Jason  
Test Date:16 November 2021

γ Range: 0 - 90DEG  
γ Interval: 0.5DEG  
Test System:EVERFINE GO-i300\_V1 SYSTEM V2.0.401  
Humidity:65.0%  
Test Distance:3.160m [K=1.0000]  
Remarks:

### UTILIZATION FACTORS TABLE

Test:U:229.80V I:0.0560A P:12.100W PF:0.9500 Freq:50.00Hz Lamp Flux:471.17lx1 lm		
NAME: SLCW100F-W1S2A-##D54	TYPE:	WEIGHT:
SPEC.:	DIM.:	SERIAL No.:1
MFR.: Switch Lighting	SUR.:	Shielding Angle:

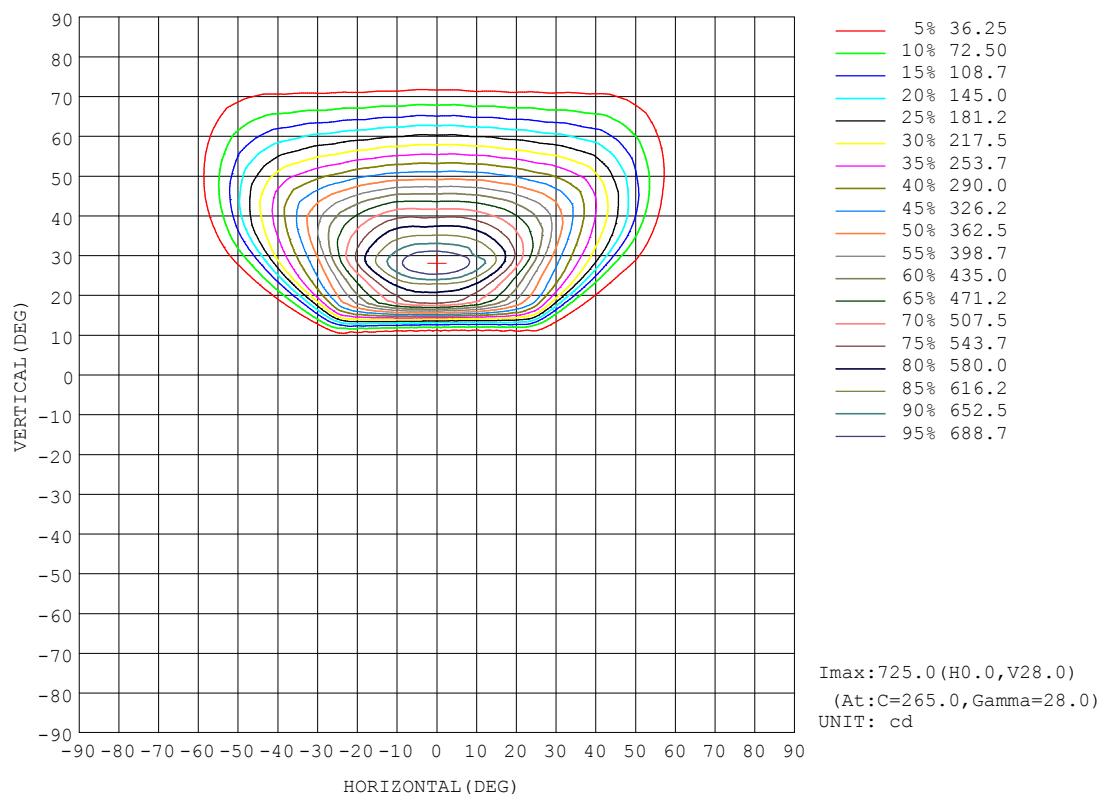
REFLECTANCE										
Ceiling	0.8	0.8	0.8	0.7	0.7	0.7	0.5	0.5	0.5	0
Walls	0.7	0.5	0.3	0.7	0.5	0.3	0.7	0.5	0.3	0
Working plane	0.2	0.2	0.2	0.2	0.2	0.2	0.2	0.2	0.2	0
ROOM INDEX	UTILIZATION FACTORS (PERCENT) $k(RI) \times RCR = 5$									
$k = 0.60$	57	45	38	56	45	38	55	44	38	31
0.80	68	56	49	67	56	49	65	55	49	42
1.00	77	67	60	76	66	59	74	67	59	52
1.25	85	75	68	84	74	68	81	73	67	60
1.50	90	81	74	89	80	74	86	78	73	66
2.00	97	89	83	95	88	83	92	86	81	74
2.50	101	94	88	99	92	87	95	90	85	77
3.00	104	98	93	102	96	92	98	93	90	81
4.00	108	102	98	105	101	97	101	97	94	86
5.00	110	105	102	107	103	100	103	100	97	88
ROOM INDEX	UF(total)									Direct
According to DIN EN 13032-2 2004			Suspended					SHRNOM = 1.25		

C Range: 0 - 360DEG  
C Interval: 5.0DEG  
Test Speed: MEDIUM  
Temperature:25.3DEG  
Operators:Jason  
Test Date:16 November 2021

$\gamma$  Range: 0 - 90DEG  
 $\gamma$  Interval: 0.5DEG  
Test System:EVERFINE GO-i300\_V1 SYSTEM V2.0.401  
Humidity:65.0%  
Test Distance:3.160m [K=1.0000]  
Remarks:

# ISOCANDELA DIAGRAM

Test:U:229.80V I:0.0560A P:12.100W PF:0.9500 Freq:50.00Hz Lamp Flux:471.17lx1 lm		
NAME: SLCW100F-W1S2A-##D54	TYPE:	WEIGHT:
SPEC.:	DIM.:	SERIAL No.:1
MFR.: Switch Lighting	SUR.:	Shielding Angle:



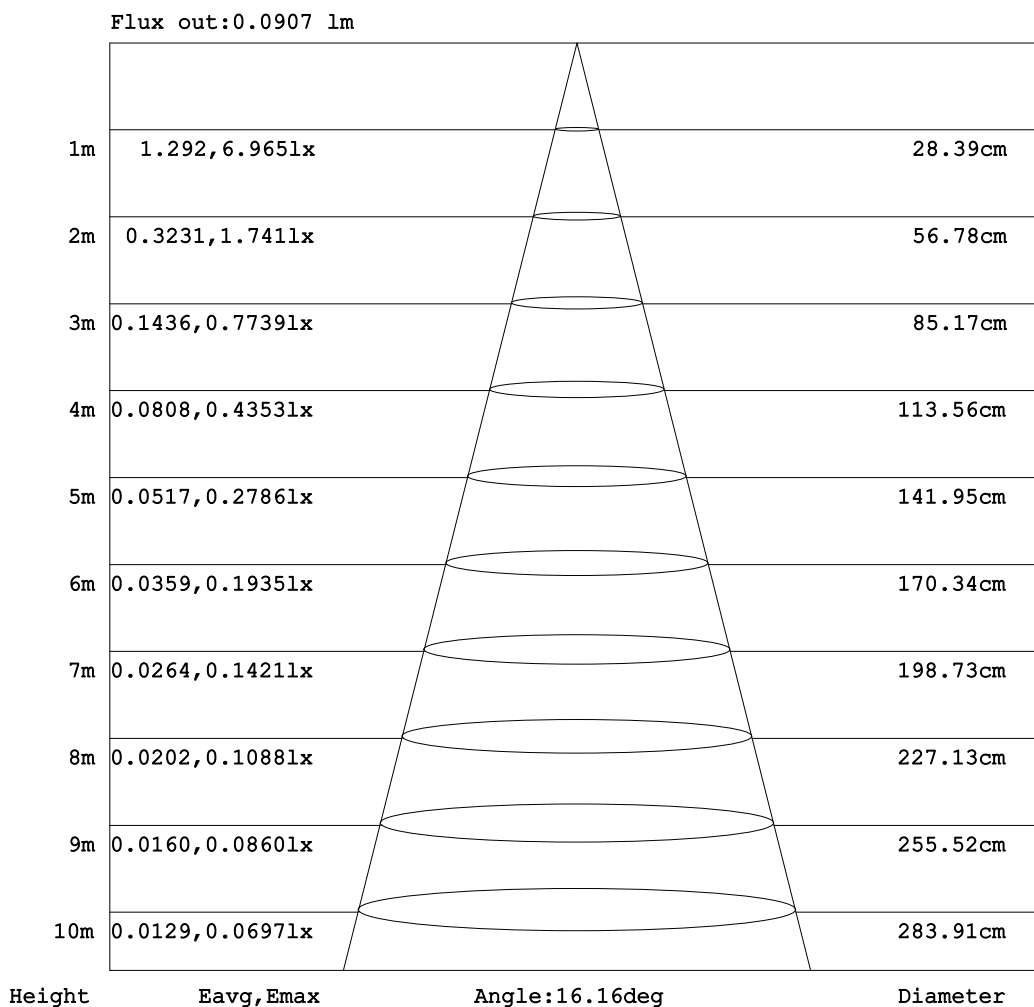
C Range: 0 - 360DEG  
C Interval: 5.0DEG  
Test Speed: MEDIUM  
Temperature: 25.3DEG  
Operators: Jason  
Test Date: 16 November 2021

γ Range: 0 - 90DEG  
γ Interval: 0.5DEG  
Test System: EVERFINE GO-i300\_V1 SYSTEM V2.0.401  
Humidity: 65.0%  
Test Distance: 3.160m [K=1.0000]  
Remarks:



AAI Figure

Test:U:229.80V I:0.0560A P:12.100W PF:0.9500 Freq:50.00Hz Lamp Flux:471.17lx1 lm		
NAME: SLCW100F-W1S2A-##D54	TYPE:	WEIGHT:
SPEC.:	DIM.:	SERIAL No.:1
MFR.: Switch Lighting	SUR.:	Shielding Angle:



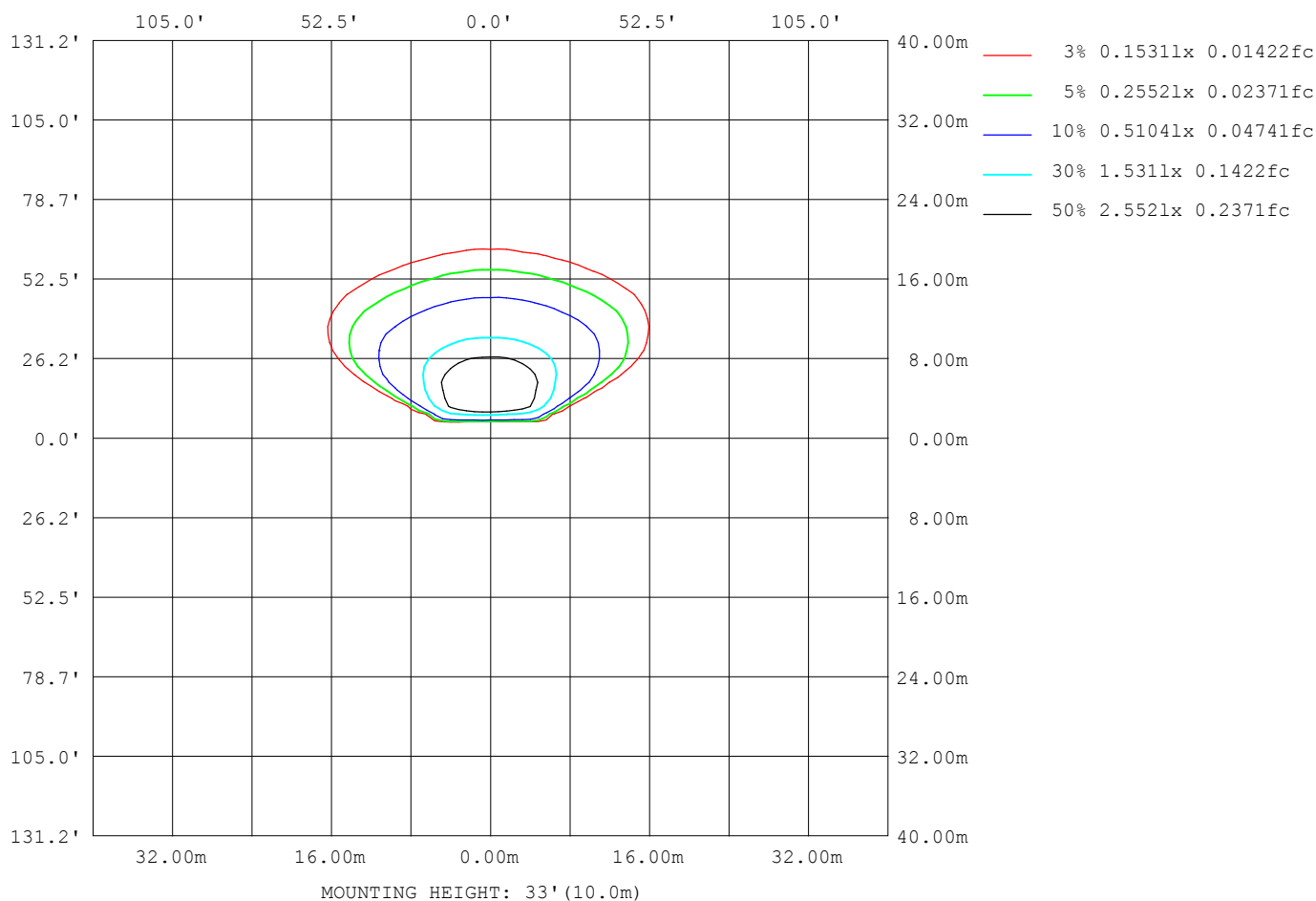
Note:The Curves indicate the illuminated area and the average illumination when the luminaire is at different distance.

C Range: 0 - 360DEG  
C Interval: 5.0DEG  
Test Speed: MEDIUM  
Temperature:25.3DEG  
Operators:Jason  
Test Date:16 November 2021

γ Range: 0 - 90DEG  
γ Interval: 0.5DEG  
Test System:EVERFINE GO-i300\_V1 SYSTEM V2.0.401  
Humidity:65.0%  
Test Distance:3.160m [K=1.0000]  
Remarks:

ISOLUX DIAGRAM

Test:U:229.80V I:0.0560A P:12.100W PF:0.9500 Freq:50.00Hz Lamp Flux:471.17lx1 lm		
NAME: SLCW100F-W1S2A-##D54	TYPE:	WEIGHT:
SPEC.:	DIM.:	SERIAL No.:1
MFR.: Switch Lighting	SUR.:	Shielding Angle:



C Range: 0 - 360DEG  
 C Interval: 5.0DEG  
 Test Speed: MEDIUM  
 Temperature:25.3DEG  
 Operators:Jason  
 Test Date:16 November 2021

$\gamma$  Range: 0 - 90DEG  
 $\gamma$  Interval: 0.5DEG  
 Test System:EVERFINE GO-i300\_V1 SYSTEM V2.0.401  
 Humidity:65.0%  
 Test Distance:3.160m [K=1.0000]  
 Remarks:

### LED Avg.L Report

Test:U:229.80V I:0.0560A P:12.100W PF:0.9500 Freq:50.00Hz Lamp Flux:471.17lx1 lm		
NAME: SLCW100F-W1S2A-##D54	TYPE:	WEIGHT:
SPEC.:	DIM.:	SERIAL No.:1
MFR.: Switch Lighting	SUR.:	Shielding Angle:

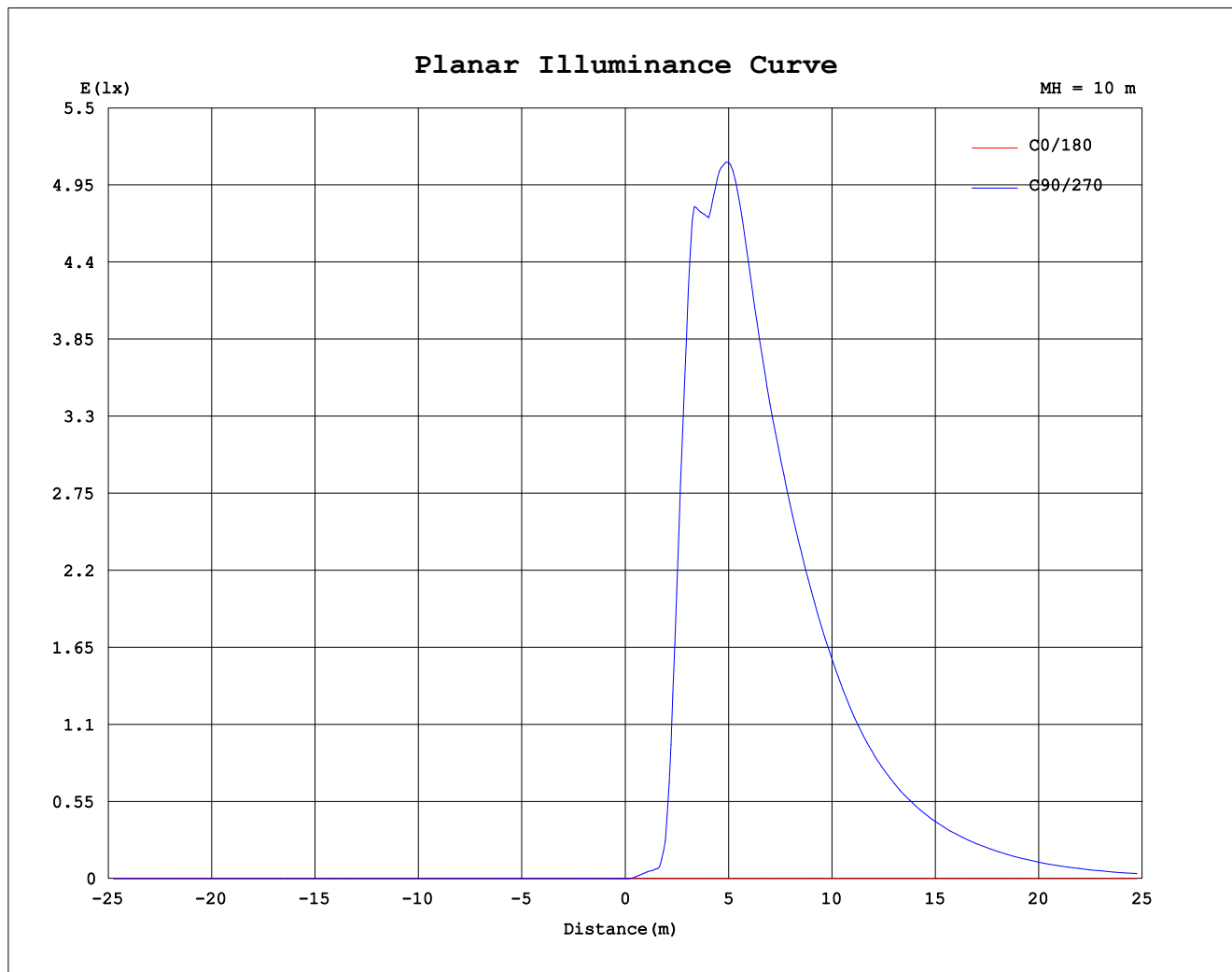
AvgL	cd/m2
L_0~180 (65) av	25
L_0~180 (75) av	17
L_0~180 (85) av	16
L_90~270 (65) av	11117
L_90~270 (75) av	3099
L_90~270 (85) av	2641
L_45 (65) av	16290
L_45 (75) av	7095
L_45 (85) av	2411

Standard: GB/T 29293-2012

C Range: 0 - 360DEG  
C Interval: 5.0DEG  
Test Speed: MEDIUM  
Temperature:25.3DEG  
Operators:Jason  
Test Date:16 November 2021

γ Range: 0 - 90DEG  
γ Interval: 0.5DEG  
Test System:EVERFINE GO-i300\_V1 SYSTEM V2.0.401  
Humidity:65.0%  
Test Distance:3.160m [K=1.0000]  
Remarks:

### Planar Illuminance Curve



C Range: 0 - 360DEG  
 C Interval: 5.0DEG  
 Test Speed: MEDIUM  
 Temperature: 25.3DEG  
 Operators: Jason  
 Test Date: 16 November 2021

$\gamma$  Range: 0 - 90DEG  
 $\gamma$  Interval: 0.5DEG  
 Test System: EVERFINE GO-i300\_V1 SYSTEM V2.0.401  
 Humidity: 65.0%  
 Test Distance: 3.160m [K=1.0000]  
 Remarks:

```

γ Range: 0 - 90DEG
γ Interval: 0.5DEG
Test System:EVERFINE GO-i300_V1 SYSTEM V2.0.401
Humidity:65.0%
Test Distance:3.160m [K=1.0000]
Remarks:

```

```

γ Range: 0 - 90DEG
γ Interval: 0.5DEG
Test System:EVERFINE GO-i300_V1 SYSTEM V2.0.401
Humidity:65.0%
Test Distance:3.160m [K=1.0000]
Remarks:

```

```

γ Range: 0 - 90DEG
γ Interval: 0.5DEG
Test System:EVERFINE GO-i300_V1 SYSTEM V2.0.401
Humidity:65.0%
Test Distance:3.160m [K=1.0000]
Remarks:

```

```

γ Range: 0 - 90DEG
γ Interval: 0.5DEG
Test System:EVERFINE GO-i300_V1 SYSTEM V2.0.401
Humidity:65.0%
Test Distance:3.160m [K=1.0000]
Remarks:

```