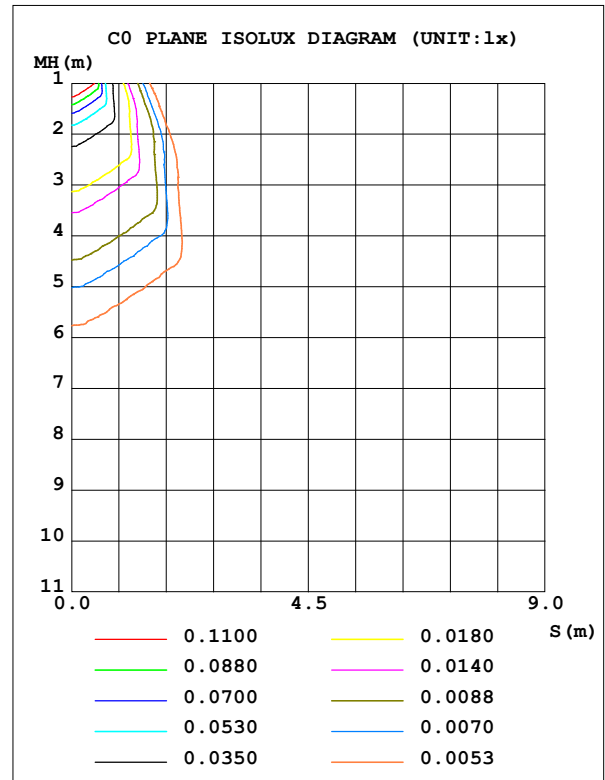
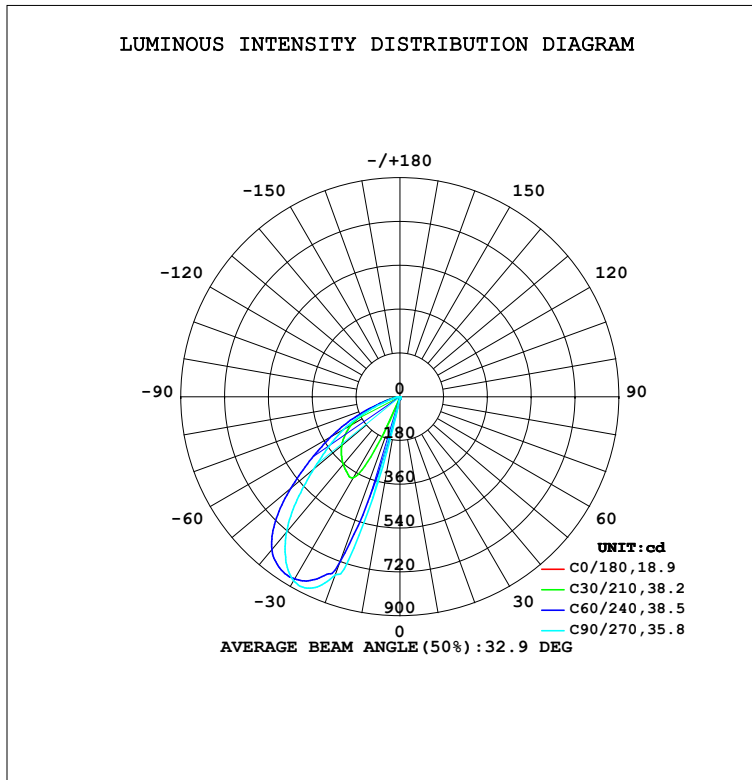


LUMINAIRE PHOTOMETRIC TEST REPORT

Test:U:229.90V I:0.0550A P:12.500W PF:0.9830 Freq:50.00Hz Lamp Flux:592.657x1 lm		
NAME: SLCW100F-W1SDP-##D12	TYPE:	WEIGHT:
SPEC.:	DIM.:	SERIAL No.:1
MFR.: Switch Lighting	SUR.:	Shielding Angle:

DATA OF LAMP		PHOTOMETRIC DATA				Eff: 47.41 lm/W
MODEL		I <sub>max</sub> (cd)	943.4	S/MH (C0/180)		0.95
NOMINAL POWER (W)	25	LOR (%)	100.0	S/MH (C90/270)		9.24
RATED VOLTAGE (V)	240	TOTAL FLUX (lm)	592.66	η UP,DN (C0-180)		0.0,0.0
NOMINAL FLUX (lm)	592.657	CIE CLASS	DIRECT	η UP,DN (C180-360)		0.0,100.0
LAMPS INSIDE	1	η up (%)	0.0	CIBSE SHR NOM		0.00
TEST VOLTAGE (V)	240.2	η down (%)	100.0	CIBSE SHR MAX		1.00



C Range: 0 - 360DEG  
C Interval: 5.0DEG  
Test Speed: MEDIUM  
Temperature:25.3DEG  
Operators:Jason  
Test Date:16 November 2021

γ Range: 0 - 90DEG  
γ Interval: 0.5DEG  
Test System:EVERFINE GO-i300\_v1 SYSTEM V2.0.401  
Humidity:65.0%  
Test Distance:3.160m [K=1.0000]  
Remarks:

### ZONAL FLUX DIAGRAM

#### ZONAL FLUX DIAGRAM:

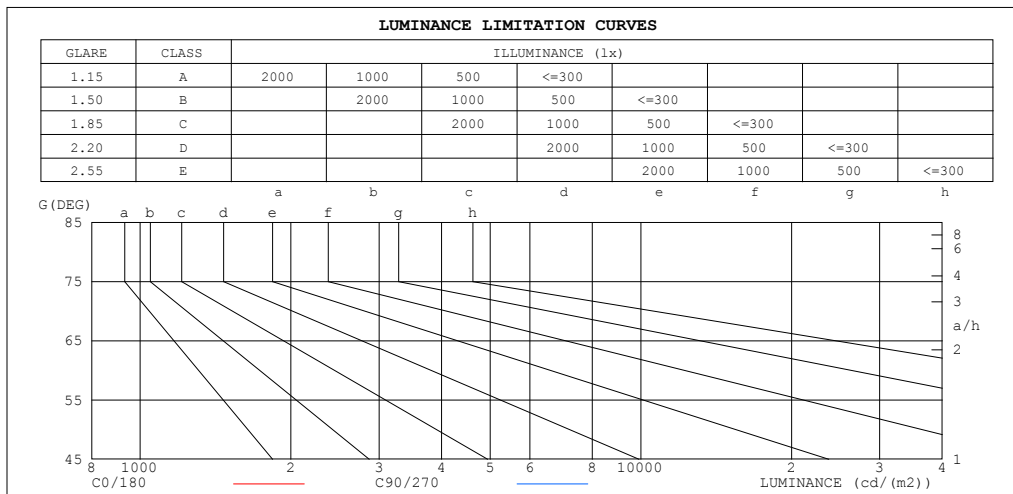
$\gamma$	C0	C45	C90	C135	C180	C225	C270	C315	$\gamma$	$\Phi$ zone	$\Phi$ total	%lum,lamp
10	0.1388	0.0503	0.0638	0.0479	0.1388	10.12	17.21	7.189	0- 10	0.2025	0.2025	0.03,0.03
20	0.1262	0.0584	0.0678	0.0437	0.1343	411.3	779.3	261.0	10- 20	22.75	22.95	3.87,3.87
30	0.0917	0.0468	0.0452	0.0365	0.0831	721.2	872.8	480.3	20- 30	97.38	120.3	20.3,20.3
40	0.0570	0.0496	0.0250	0.0359	0.0550	681.3	725.5	446.0	30- 40	139.8	260.1	43.9,43.9
50	0.0340	0.0165	0	0.0173	0.0890	568.2	461.9	381.9	40- 50	140.4	400.5	67.6,67.6
60	0.0198	0.0061	0	0.0058	0.3256	364.2	264.9	261.9	50- 60	110.0	510.6	86.2,86.2
70	0.0122	0	0	0.0045	0.1994	155.3	73.45	107.8	60- 70	62.19	572.8	96.6,96.6
80	0.0051	0	0	0.0019	0.0760	27.66	12.44	18.23	70- 80	17.10	589.9	99.5,99.5
90	0	0	0	0.0013	0.0346	2.995	5.045	1.869	80- 90	2.791	592.7	100,100
100									90-100			
110									100-110			
120									110-120			
130									120-130			
140									130-140			
150									140-150			
160									150-160			
170									160-170			
180									170-180			
DEG	LUMINOUS INTENSITY:cd									UNIT:lm		

C Range: 0 - 360DEG  
C Interval: 5.0DEG  
Test Speed: MEDIUM  
Temperature:25.3DEG  
Operators:Jason  
Test Date:16 November 2021

$\gamma$  Range: 0 - 90DEG  
 $\gamma$  Interval: 0.5DEG  
Test System:EVERFINE GO-i300\_v1 SYSTEM V2.0.401  
Humidity:65.0%  
Test Distance:3.160m [K=1.0000]  
Remarks:

LUMINANCE LIMITATION CURVES

Test:U:229.90V I:0.0550A P:12.500W PF:0.9830 Freq:50.00Hz Lamp Flux:592.657x1 lm		
NAME: SLCW100F-W1SDP-##D12	TYPE:	WEIGHT:
SPEC.:	DIM.:	SERIAL No.:1
MFR.: Switch Lighting	SUR.:	Shielding Angle:



LUMINANCE cd/(m2)		
G (DEG)	C0/180	C90/270
85	1	0
80	3	0
75	3	0
70	3	0
65	4	0
60	4	0
55	4	0
50	5	0
45	5	1

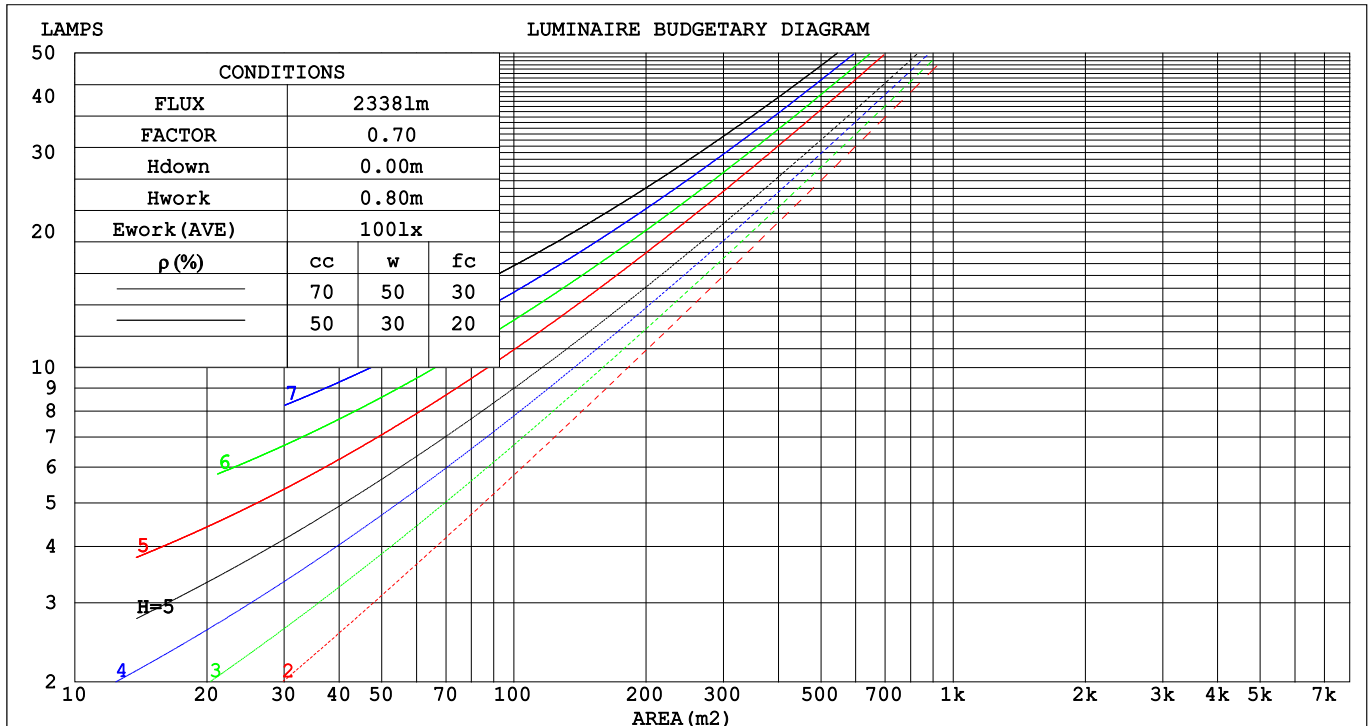
C Range: 0 - 360DEG  
 C Interval: 5.0DEG  
 Test Speed: MEDIUM  
 Temperature:25.3DEG  
 Operators:Jason  
 Test Date:16 November 2021

γ Range: 0 - 90DEG  
 γ Interval: 0.5DEG  
 Test System:EVERFINE GO-i300\_V1 SYSTEM V2.0.401  
 Humidity:65.0%  
 Test Distance:3.160m [K=1.0000]  
 Remarks:

## CU AND LUMINAIRE BUDGETARY ESTIMATE DIAGRAM

Test:U:229.90V I:0.0550A P:12.500W PF:0.9830 Freq:50.00Hz Lamp Flux:592.657x1 lm		
NAME: SLCW100F-W1SDP-##D12	TYPE:	WEIGHT:
SPEC.:	DIM.:	SERIAL No.:1
MFR.: Switch Lighting	SUR.:	Shielding Angle:

pcc	80%			70%			50%			30%			10%			0
pw	50%	30%	10%	50%	30%	10%	50%	30%	10%	50%	30%	10%	50%	30%	10%	0
pfc	20%			20%			20%			20%			20%			0
RCR	RCR:Room Cavity Ratio						Coefficients of Utilization(CU)									
0.0	1.19	1.19	1.19	1.16	1.16	1.16	1.11	1.11	1.11	1.06	1.06	1.06	1.02	1.02	1.02	.00
1.0	1.05	1.01	.98	1.03	.99	.96	.99	.96	.93	.95	.93	.90	.91	.89	.88	.86
2.0	.92	.85	.80	.90	.84	.79	.87	.82	.77	.83	.79	.75	.80	.77	.74	.72
3.0	.80	.72	.66	.79	.71	.65	.76	.70	.64	.73	.68	.63	.71	.66	.62	.60
4.0	.71	.62	.55	.69	.61	.55	.67	.60	.54	.64	.58	.53	.62	.57	.53	.50
5.0	.62	.53	.47	.61	.53	.46	.59	.52	.46	.57	.50	.45	.55	.49	.45	.43
6.0	.55	.46	.40	.54	.46	.40	.53	.45	.39	.51	.44	.39	.49	.43	.38	.36
7.0	.49	.40	.34	.49	.40	.34	.47	.39	.34	.46	.39	.33	.44	.38	.33	.31
8.0	.44	.36	.30	.44	.35	.29	.42	.35	.29	.41	.34	.29	.40	.34	.29	.27
9.0	.40	.32	.26	.39	.31	.26	.38	.31	.26	.37	.30	.25	.36	.30	.25	.23
10.0	.36	.28	.23	.36	.28	.23	.35	.28	.22	.34	.27	.22	.33	.27	.22	.20



C Range: 0 - 360DEG  
C Interval: 5.0DEG  
Test Speed: MEDIUM  
Temperature:25.3DEG  
Operators:Jason  
Test Date:16 November 2021

γ Range: 0 - 90DEG  
γ Interval: 0.5DEG  
Test System:EVERFINE GO-i300\_V1 SYSTEM V2.0.401  
Humidity:65.0%  
Test Distance:3.160m [K=1.0000]  
Remarks:

### WEC AND CCEC

Test:U:229.90V I:0.0550A P:12.500W PF:0.9830 Freq:50.00Hz Lamp Flux:592.657x1 lm																	
NAME: SLCW100F-W1SDP-##D12									TYPE:						WEIGHT:		
SPEC.:									DIM.:						SERIAL No.:1		
MFR.: Switch Lighting									SUR.:						Shielding Angle:		

pcc	80%			70%			50%			30%			10%			0
pw	50%	30%	10%	50%	30%	10%	50%	30%	10%	50%	30%	10%	50%	30%	10%	0
pfc	20%			20%			20%			20%			20%			0
RCR	RCR:Room Cavity Ratio						Wall Exitance Coefficients(WEC)									
0.0																
1.0	.283	.161	.051	.276	.157	.050	.262	.151	.048	.250	.144	.046	.239	.139	.045	
2.0	.277	.152	.047	.271	.149	.046	.259	.144	.045	.248	.139	.044	.239	.135	.043	
3.0	.263	.140	.042	.257	.138	.042	.247	.134	.041	.238	.130	.040	.229	.127	.039	
4.0	.247	.128	.038	.242	.127	.037	.233	.124	.037	.225	.121	.036	.217	.118	.036	
5.0	.232	.118	.034	.227	.117	.034	.219	.114	.034	.212	.112	.033	.205	.109	.033	
6.0	.217	.109	.031	.213	.108	.031	.206	.106	.031	.199	.103	.030	.193	.101	.030	
7.0	.204	.101	.029	.200	.100	.028	.194	.098	.028	.187	.096	.028	.182	.094	.028	
8.0	.191	.093	.026	.188	.093	.026	.182	.091	.026	.177	.089	.026	.171	.088	.026	
9.0	.180	.087	.024	.177	.086	.024	.172	.085	.024	.167	.084	.024	.162	.082	.024	
10.0	.170	.081	.023	.167	.081	.023	.162	.080	.022	.158	.078	.022	.154	.077	.022	

pcc	80%			70%			50%			30%			10%			0
pw	50%	30%	10%	50%	30%	10%	50%	30%	10%	50%	30%	10%	50%	30%	10%	0
pfc	20%			20%			20%			20%			20%			0
RCR	RCR:Room Cavity Ratio						Ceiling Cavity Exitance Coefficients (CCEC)									
0.0	.190	.190	.190	.163	.163	.163	.111	.111	.111	.064	.064	.064	.020	.020	.020	
1.0	.178	.156	.137	.153	.134	.117	.104	.092	.081	.060	.053	.047	.019	.017	.015	
2.0	.170	.132	.100	.146	.114	.086	.100	.079	.060	.058	.046	.035	.018	.015	.011	
3.0	.163	.114	.075	.140	.099	.065	.096	.068	.046	.055	.040	.027	.018	.013	.009	
4.0	.156	.101	.059	.134	.087	.051	.092	.061	.036	.053	.036	.021	.017	.012	.007	
5.0	.150	.091	.047	.129	.078	.041	.089	.055	.029	.051	.032	.017	.017	.010	.006	
6.0	.143	.082	.039	.123	.071	.034	.085	.050	.024	.049	.029	.014	.016	.010	.005	
7.0	.137	.076	.033	.118	.066	.028	.082	.046	.020	.047	.027	.012	.015	.009	.004	
8.0	.131	.070	.028	.113	.061	.024	.078	.043	.017	.045	.025	.010	.015	.008	.003	
9.0	.125	.065	.024	.108	.057	.021	.075	.040	.015	.044	.023	.009	.014	.008	.003	
10.0	.120	.061	.022	.103	.053	.019	.072	.037	.013	.042	.022	.008	.014	.007	.003	

C Range: 0 - 360DEG  
C Interval: 5.0DEG  
Test Speed: MEDIUM  
Temperature:25.3DEG  
Operators:Jason  
Test Date:16 November 2021

γ Range: 0 - 90DEG  
γ Interval: 0.5DEG  
Test System:EVERFINE GO-i300\_V1 SYSTEM V2.0.401  
Humidity:65.0%  
Test Distance:3.160m [K=1.0000]  
Remarks:

### UGR(Unified Glare Rating) Table

Test:U:229.90V I:0.0550A P:12.500W PF:0.9830 Freq:50.00Hz Lamp Flux:592.657x1 lm											
NAME: SLCW100F-W1SDP-##D12					TYPE:			WEIGHT:			
SPEC.:					DIM.:			SERIAL No.:1			
MFR.: Switch Lighting					SUR.:			Shielding Angle:			
ceiling/cavity	0.7	0.7	0.5	0.5	0.3	0.7	0.7	0.5	0.5	0.3	
walls	0.5	0.3	0.5	0.3	0.3	0.5	0.3	0.5	0.3	0.3	
working plane	0.2	0.2	0.2	0.2	0.2	0.2	0.2	0.2	0.2	0.2	
Room dimensions		Viewed crosswise					Viewed endwise				
x = 2H y = 2H		-35.9	-34.3	-35.6	-34.1	-33.9	-42.4	-40.9	-42.2	-40.7	-40.5
	3H	-34.6	-33.2	-34.3	-33.0	-32.7	-42.6	-41.2	-42.3	-41.0	-40.8
	4H	-34.2	-32.9	-33.9	-32.7	-32.4	-42.8	-41.4	-42.4	-41.2	-40.9
	6H	-34.1	-32.8	-33.8	-32.6	-32.3	-42.9	-41.6	-42.5	-41.3	-41.1
	8H	-34.1	-32.9	-33.7	-32.6	-32.3	-42.9	-41.7	-42.6	-41.4	-41.1
	12H	-34.1	-33.0	-33.8	-32.7	-32.4	-43.0	-41.8	-42.6	-41.5	-41.2
4H	2H	-36.0	-34.7	-35.7	-34.4	-34.2	-41.6	-40.2	-41.3	-40.0	-39.7
	3H	-34.5	-33.3	-34.1	-33.0	-32.7	-41.7	-40.6	-41.4	-40.3	-40.0
	4H	-33.8	-32.7	-33.4	-32.4	-32.1	-41.8	-40.8	-41.5	-40.5	-40.1
	6H	-33.5	-32.6	-33.1	-32.2	-31.8	-41.9	-41.0	-41.5	-40.7	-40.3
	8H	-33.5	-32.6	-33.0	-32.2	-31.9	-42.0	-41.1	-41.6	-40.8	-40.4
	12H	-33.5	-32.7	-33.0	-32.3	-31.9	-42.0	-41.2	-41.6	-40.9	-40.5
8H	4H	-33.8	-33.0	-33.4	-32.6	-32.2	-41.0	-40.2	-40.6	-39.8	-39.4
	6H	-33.4	-32.7	-32.9	-32.3	-31.8	-41.1	-40.4	-40.6	-40.0	-39.6
	8H	-33.2	-32.6	-32.8	-32.2	-31.8	-41.1	-40.5	-40.7	-40.1	-39.6
	12H	-33.2	-32.7	-32.7	-32.2	-31.8	-41.2	-40.6	-40.7	-40.2	-39.7
12H	4H	-33.9	-33.1	-33.4	-32.7	-32.3	-40.8	-40.0	-40.4	-39.6	-39.2
	6H	-33.4	-32.8	-32.9	-32.4	-31.9	-40.8	-40.2	-40.4	-39.8	-39.4
	8H	-33.3	-32.7	-32.8	-32.3	-31.8	-40.9	-40.4	-40.4	-39.9	-39.4
Variations with the observer position at spacings:											
S = 1.0H	+ 1.6 / - 0.8					+ 2.8 / - 5.0					
1.5H	+ 2.3 / - 1.8					+ 3.6 / - 4.2					
2.0H	+ 2.9 / - 2.4					+ 2.3 / - 3.1					

CIE Pub.117, 592.7 lm Total Lamp Luminous Flux Correct (8log(F/F0) = -1.8)

C Range: 0 - 360DEG  
C Interval: 5.0DEG  
Test Speed: MEDIUM  
Temperature:25.3DEG  
Operators:Jason  
Test Date:16 November 2021

γ Range: 0 - 90DEG  
γ Interval: 0.5DEG  
Test System:EVERFINE GO-i300\_V1 SYSTEM V2.0.401  
Humidity:65.0%  
Test Distance:3.160m [K=1.0000]  
Remarks:

### UTILIZATION FACTORS TABLE

Test:U:229.90V I:0.0550A P:12.500W PF:0.9830 Freq:50.00Hz Lamp Flux:592.657x1 lm		
NAME: SLCW100F-W1SDP-##D12	TYPE:	WEIGHT:
SPEC.:	DIM.:	SERIAL No.:1
MFR.: Switch Lighting	SUR.:	Shielding Angle:

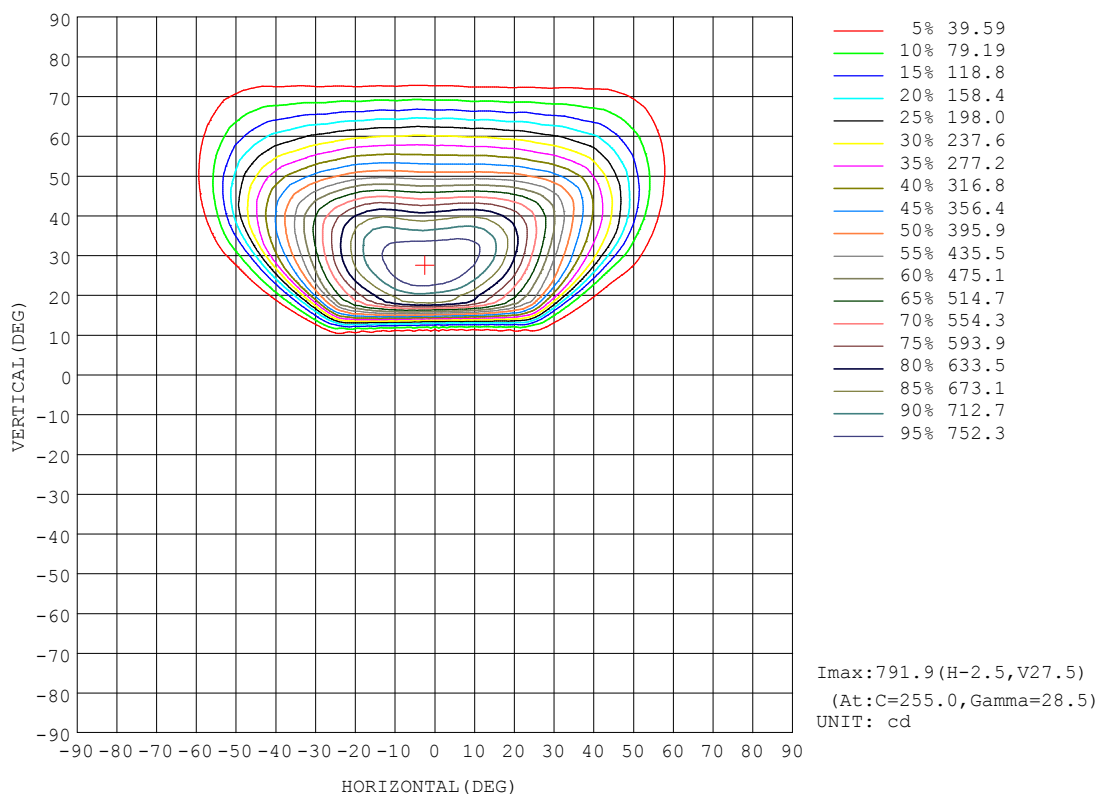
REFLECTANCE										
Ceiling	0.8	0.8	0.8	0.7	0.7	0.7	0.5	0.5	0.5	0
Walls	0.7	0.5	0.3	0.7	0.5	0.3	0.7	0.5	0.3	0
Working plane	0.2	0.2	0.2	0.2	0.2	0.2	0.2	0.2	0.2	0
ROOM INDEX	UTILIZATION FACTORS (PERCENT) $k(RI) \times RCR = 5$									
$k = 0.60$	56	44	37	55	44	37	54	43	37	30
0.80	67	56	48	66	55	48	64	54	48	41
1.00	77	66	59	76	65	59	73	67	58	51
1.25	85	74	68	83	74	67	80	72	66	59
1.50	90	80	74	88	79	73	85	78	72	65
2.00	97	89	83	95	88	82	92	85	81	73
2.50	100	93	88	98	92	87	95	89	85	77
3.00	104	97	92	102	96	91	98	93	89	81
4.00	107	102	98	105	100	97	101	97	94	85
5.00	110	105	101	107	103	100	103	100	97	88
ROOM INDEX	UF(total)									Direct
According to DIN EN 13032-2 2004			Suspended					SHRNOM = 1.25		

C Range: 0 - 360DEG  
C Interval: 5.0DEG  
Test Speed: MEDIUM  
Temperature:25.3DEG  
Operators:Jason  
Test Date:16 November 2021

$\gamma$  Range: 0 - 90DEG  
 $\gamma$  Interval: 0.5DEG  
Test System:EVERFINE GO-i300\_V1 SYSTEM V2.0.401  
Humidity:65.0%  
Test Distance:3.160m [K=1.0000]  
Remarks:

# ISOCANDELA DIAGRAM

Test:U:229.90V I:0.0550A P:12.500W PF:0.9830 Freq:50.00Hz Lamp Flux:592.657x1 lm		
NAME: SLCW100F-W1SDP-##D12	TYPE:	WEIGHT:
SPEC.:	DIM.:	SERIAL No.:1
MFR.: Switch Lighting	SUR.:	Shielding Angle:



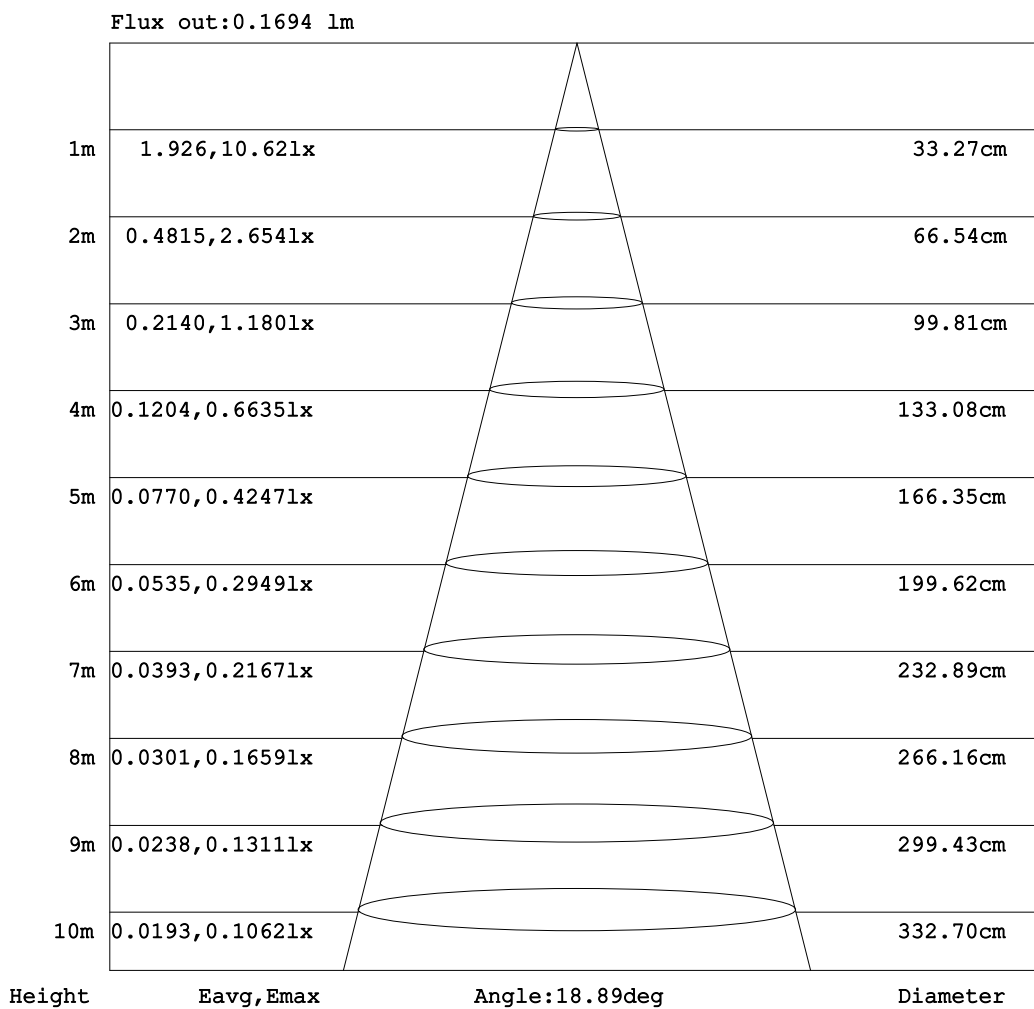
C Range: 0 - 360DEG  
C Interval: 5.0DEG  
Test Speed: MEDIUM  
Temperature:25.3DEG  
Operators:Jason  
Test Date:16 November 2021

$\gamma$  Range: 0 - 90DEG  
 $\gamma$  Interval: 0.5DEG  
Test System:EVERFINE GO-i300\_v1 SYSTEM V2.0.401  
Humidity:65.0%  
Test Distance:3.160m [K=1.0000]  
Remarks:



**AAI Figure**

Test:U:229.90V I:0.0550A P:12.500W PF:0.9830 Freq:50.00Hz Lamp Flux:592.657x1 lm		
NAME: SLCW100F-W1SDP-##D12	TYPE:	WEIGHT:
SPEC.:	DIM.:	SERIAL No.:1
MFR.: Switch Lighting	SUR.:	Shielding Angle:



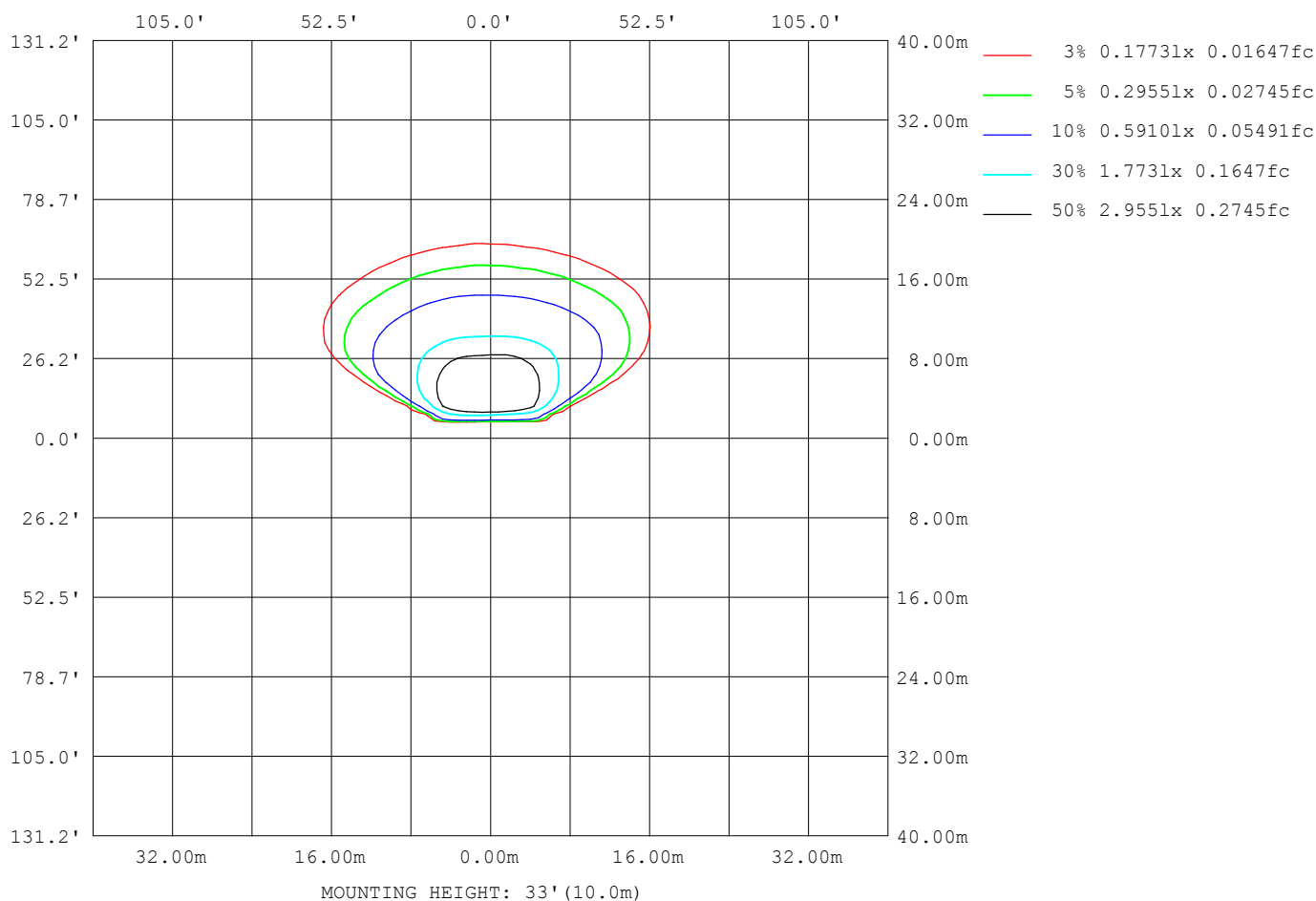
Note:The Curves indicate the illuminated area and the average illumination when the luminaire is at different distance.

C Range: 0 - 360DEG  
 C Interval: 5.0DEG  
 Test Speed: MEDIUM  
 Temperature:25.3DEG  
 Operators:Jason  
 Test Date:16 November 2021

γ Range: 0 - 90DEG  
 γ Interval: 0.5DEG  
 Test System:EVERFINE GO-i300\_V1 SYSTEM V2.0.401  
 Humidity:65.0%  
 Test Distance:3.160m [K=1.0000]  
 Remarks:

ISOLUX DIAGRAM

Test:U:229.90V I:0.0550A P:12.500W PF:0.9830 Freq:50.00Hz Lamp Flux:592.657x1 lm		
NAME: SLCW100F-W1SDP-##D12	TYPE:	WEIGHT:
SPEC.:	DIM.:	SERIAL No.:1
MFR.: Switch Lighting	SUR.:	Shielding Angle:



C Range: 0 - 360DEG  
C Interval: 5.0DEG  
Test Speed: MEDIUM  
Temperature:25.3DEG  
Operators:Jason  
Test Date:16 November 2021

γ Range: 0 - 90DEG  
γ Interval: 0.5DEG  
Test System:EVERFINE GO-i300\_V1 SYSTEM V2.0.401  
Humidity:65.0%  
Test Distance:3.160m [K=1.0000]  
Remarks:

### LED Avg.L Report

Test:U:229.90V I:0.0550A P:12.500W PF:0.9830 Freq:50.00Hz Lamp Flux:592.657x1 lm		
NAME: SLCW100F-W1SDP-##D12	TYPE:	WEIGHT:
SPEC.:	DIM.:	SERIAL No.:1
MFR.: Switch Lighting	SUR.:	Shielding Angle:

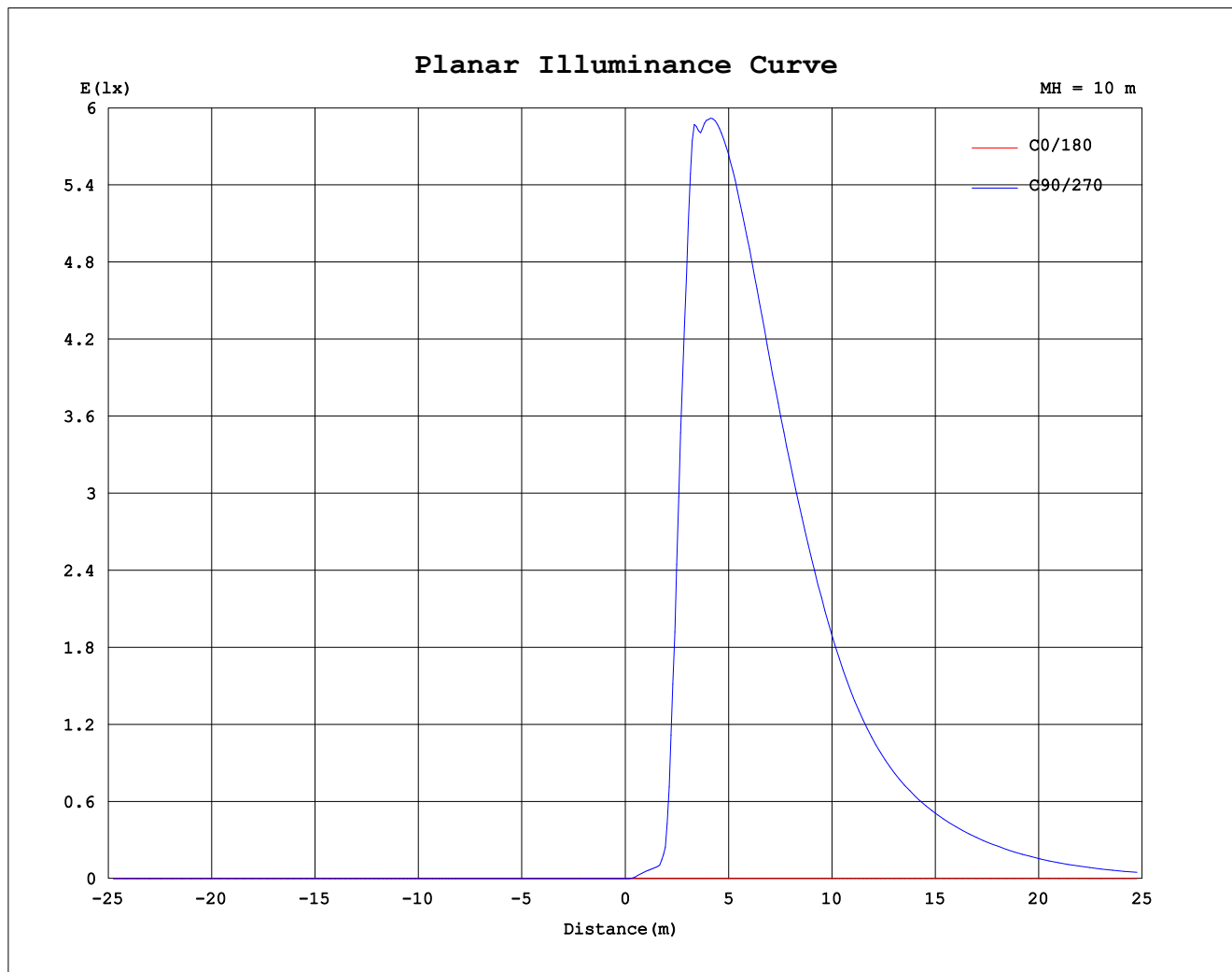
AvgL	cd/m2
L_0~180 (65) av	27
L_0~180 (75) av	21
L_0~180 (85) av	21
L_90~270 (65) av	15376
L_90~270 (75) av	4198
L_90~270 (85) av	3495
L_45 (65) av	20531
L_45 (75) av	9676
L_45 (85) av	3351

Standard: GB/T 29293-2012

C Range: 0 - 360DEG  
C Interval: 5.0DEG  
Test Speed: MEDIUM  
Temperature:25.3DEG  
Operators:Jason  
Test Date:16 November 2021

γ Range: 0 - 90DEG  
γ Interval: 0.5DEG  
Test System:EVERFINE GO-i300\_V1 SYSTEM V2.0.401  
Humidity:65.0%  
Test Distance:3.160m [K=1.0000]  
Remarks:

### Planar Illuminance Curve



C Range: 0 - 360DEG  
 C Interval: 5.0DEG  
 Test Speed: MEDIUM  
 Temperature: 25.3DEG  
 Operators: Jason  
 Test Date: 16 November 2021

$\gamma$  Range: 0 - 90DEG  
 $\gamma$  Interval: 0.5DEG  
 Test System: EVERFINE GO-i300\_V1 SYSTEM V2.0.401  
 Humidity: 65.0%  
 Test Distance: 3.160m [K=1.0000]  
 Remarks:

```

γ Range: 0 - 90DEG
γ Interval: 0.5DEG
Test System:EVERFINE GO-i300_V1 SYSTEM V2.0.401
Humidity:65.0%
Test Distance:3.160m [K=1.0000]
Remarks:

```

```

γ Range: 0 - 90DEG
γ Interval: 0.5DEG
Test System:EVERFINE GO-i300_V1 SYSTEM V2.0.401
Humidity:65.0%
Test Distance:3.160m [K=1.0000]
Remarks:

```

```

γ Range: 0 - 90DEG
γ Interval: 0.5DEG
Test System:EVERFINE GO-i300_V1 SYSTEM V2.0.401
Humidity:65.0%
Test Distance:3.160m [K=1.0000]
Remarks:

```

```

γ Range: 0 - 90DEG
γ Interval: 0.5DEG
Test System:EVERFINE GO-i300_V1 SYSTEM V2.0.401
Humidity:65.0%
Test Distance:3.160m [K=1.0000]
Remarks:

```