

Installation Instructions – PM169

SL201/SL211/SLDL624F/SLDL644T
Mini-LIGHT'Z (1W)

Classification: IC-F / IC-4

Recessed luminaire where approved fixed building insulation material that can be safely be continuously exposed to 90°C is allowed to abut and cover the luminaire.

350mA / 700mA constant current driver is non-coverable

Constant current:

350mA or 700mA (see over page)

Approved insulation:

Pink Batts, Bradford Gold, InsulPro Polyester insulation, Ecofleece, Autex Greenstuf, Earthwool, Premier insulation.

Contact Switch Lighting for other insulation information.

Caution:

Always turn power off when connecting or disconnecting luminaires.

Note:

White models suitable for interior use only.

Warranty:

Luminaire: 7 years (5 years if outdoors)

Proof of purchase is required. See website for full warranty conditions.

Please see overleaf for driver compatibility chart

For Dimmer information visit www.switch-lighting.co.nz

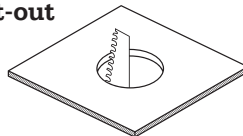
Library / Spec Sheets / LED Tips and Tricks / pages 4-5

Required clearance: Standard

Required clearance from structural members and building elements:

SCB = 0mm **HCB** = 0mm

Cut-out



SL201 16mm

SL211 20mm

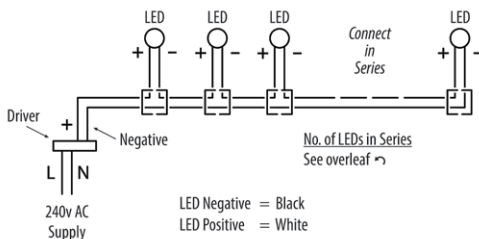
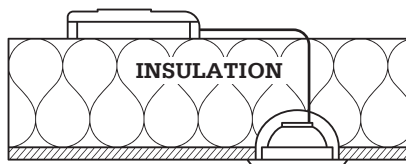
SLDL624F 32mm

SLDL644T 32mm

Installation:

(by registered electrician only)

1. Ensure driver is disconnected from mains supply before connecting LED/s.
2. Connect the LED/s and driver in **SERIES**.
3. Ensure connections are watertight – LED/s and driver may be permanently damaged if not wired correctly.



How many constant current lights per driver?

Use the convenient table below to check max & min number of lights to connect:

230V Constant current drivers									
Driver	Power max	Max V	Output	SL201 SL211 SDDL614T SDDL624F SDDL644T SSWS3 (all types)	SL204 SL214	SDDL614T SDDL624F SDDL644T (all types)	SL900 SL901	Dimmable	Comment
Current				350mA	350mA	700mA	500mA		
SE-9-350-700	9W	2-12	350 / 400 450 / 500 550 / 600 650 / 700mA	1-3	N/A	1-3	1	TE dimmable	Specify current on order
SE-12-100-400	12W	Varies	100 / 150 200 / 250 300 / 400mA	3-11 (4-14 Red) (3-10 Green)	1-2	N/A	1-3 @ 400mA	TE dimmable	Specify current on order
SE-15-350-700	15W	Varies	350 / 400 500 / 550 600 / 650 700mA	3-13 (4-17 Red) (3-12 Green)	1-3	3-6 (4-8 Red)	2	TE dimmable	Specify current on order
AD-36-200-1200	36W	Varies	200 / 350 500 / 600 700 / 900 1050 / 1200mA	4-17 (5-22 Red) (4-15 Green)	1-4	4-16 (5-21 Red) (4-15 Green)	2-5	1-10V 0-10V Push Dim PWM RX (variable resistor or rheostat)	Specify current on order
Mini350mA	4W	3-12	350mA	1-3	N/A	N/A	1@ 350MA	No	IP65
Mini700mA	4W	3-6	700mA	N/A	N/A	1	N/A	No	IP65
IE-12D	12W	Varies	180-500mA	5-11	2-2	N/A		Dali	Dali 1-100% dimming. Specify current on order

Low voltage DC drivers (for battery and solar use)						
Driver	Power max	Input V	Output	SL201 SL211 SDDL614T SDDL624F SDDL644T SSWS3 (all types)	Dimmable	Comment
LDD350LW	8W	9-36V	2-32V @350mA	Depends on i/p voltage from batteries etc. 3@12V i/p 6@24V i/p	PWM dimming	Step down only. o/p volts=i/p volts - 3V
LDB300LW	12W	9-36V	2-40V @300mA	1-12 @300mA	PWM dimming	Step up/down. Can also power SL40/SL50/SL55 from batteries