



Whangarei private residence
Integrated Electrical & Solar

Multi-purpose Lighting

Versatile Illumination

Discover limitless lighting possibilities with Switch Lighting's Multi-purpose Lighting range. These versatile fixtures break free from conventional restrictions. Look for the IP67 rating to be sure which products are perfect for both indoor and outdoor use.

With our Switch Lighting products being designed and engineered by our team of in-house engineers, you can be sure all Switch Lighting products are made with the highest quality materials, and these Multi-purpose products stand strong in New Zealand's coastal and mountainous regions.

Creating dazzling indoor spaces and alluring outdoor environments, Switch Lighting's innovative products push the boundaries of lighting design, offering you a world of creativity and long-lasting durability.

The multi-purpose range of products combined with Switch Lighting intelligent controls empower homeowners to create personalised lighting scenes in any space with ease. Seamlessly integrating into smart home controls, this synergy offers a sophisticated and convenient lighting solution, enhancing both ambiance and energy efficiency in the modern connected home.

The ever popular Multi-LIGHTZ is available in two beam angle options or you can select the low glare Eyelid luminaire. The dimmable constant current variant of this product unlocks even more creative potential for exciting lighting applications.

The all-purpose Mini-LIGHTZ Deep Fixed and Tilt variants are exceptional additions to our impressive 1-Watt tiny form factor collection of products.

The M-LIGHTZ range is a solid and reliable fixture available in all trim options, including Aluminium, 316 Stainless Steel and Copper, and with a high CRI of 90, is perfect for accentuating architectural features.



Multi-LIGHTZ



Design Builders, Petone, Wellington



70° Trim



Eyelid Trim
(Shown Actual Size)



90° Trim



Matt Black
316 Stainless Steel



Matt Bronze
316 Stainless Steel



Black
316 Stainless Steel



316
Stainless Steel



Matt
316 Stainless Steel



White
316 Stainless Steel



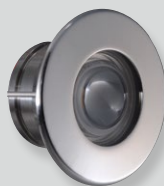
Matt Black
316 Stainless Steel



Matt Bronze
316 Stainless Steel



Black
316 Stainless Steel



316
Stainless Steel



Matt
316 Stainless Steel



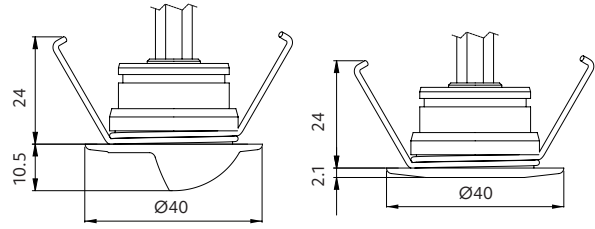
White
316 Stainless Steel





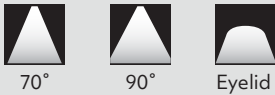
Multi-LIGHTZ

- + a versatile luminaire to elevate interior & exterior space
- + dimmable constant current
- + use outdoors on steps / paths / deck lighting
- + use indoors on stairs / hallways / ambient lighting
- + 316 stainless steel
- + IP67
- + over voltage protection for constant voltage
- + constant voltage (12VDC) / constant current (Max 500mA)



Options

Beam angle



CCT



Trim colour



CRI

CRI 80

Power Supply - Constant Current (SL42) 230VAC Circuit

Driver ordered separately
Max 500mA
See Tips and Tricks on our website for driver options.

Power Supply - Constant Voltage (SL41) 12VDC Circuit

Driver ordered separately
Q4-12V-20W (IP20) 1-11 lights in parallel
SLDV-12V-40W (IP67) 1-21 lights in parallel
SLDV-12V-75W (IP67) 1-45 lights in parallel
Higher output power supplies available
Please refer online for cable size requirements (voltage drop)



Contact Switch Lighting for Casambi Smart Control options.

Scan to view driver options

Product information

Table is based on: 2700K
Contact Switch Lighting for data of other variants

Model	Luminaire power (W)	Forward voltage (V _f)	Delivered lumens (lm)	Insulation coverable		
				NZ	AU	UK/EU
SL41 constant voltage (CV)	1.6 (130mA)	11-13	100	IC-F	IC-4	✓
SL42 constant current (CC)	1.5 (500mA)	3	150	IC-F	IC-4	✓



Size
40x24mm



Cut-out
Ø32mm



Hole depth
>40mm



How to specify Multi-LIGHTZ

Please confirm model option availability from our website. **Note: driver is ordered separately.**

e.g. code = **SL41-70-27-SS**

Model	Beam	CCT	Trim Colour	Market
SL41 = Constant voltage SL42 = Constant current	70 = 70° 90 = 90° EL = Eyelid	27 = 2700K 30 = 3000K 40 = 4000K (SL41 / SL41-EL only)	SS = 316 Stainless Steel MS = Matt 316 Stainless Steel B = Black 316 Stainless Steel W = White 316 Stainless Steel MB = Matt Black 316 Stainless Steel MZ = Matt Bronze 316 Stainless Steel	1 = NZ 2 = UK 3 = EU

Please see www.switch-lighting.co.nz for specifications, lux levels, SDoCs, ies files and installation instructions.



Warranty
5 Years

L70 (50,000 h)



M-LIGHTZ



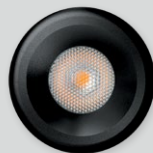
Waiheke private residence
Astrech Electrical



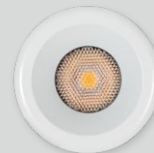
SL900 Constant Current
SL910 Constant Voltage



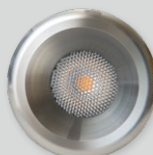
Natural Anodised
Aluminium



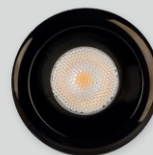
Black Anodised
Aluminium



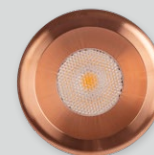
White
Aluminium



316 Stainless Steel



Black
316 Stainless Steel



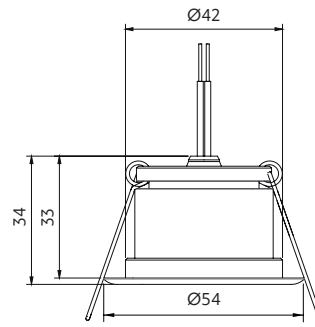
Copper

Scan to view website



M-LIGHTZ

- + a superb luminaire for creating captivating accent lighting
- + use outdoors under soffits
- + use indoors for feature lighting
- + IP67
- + constant current (350 & 500mA) / constant voltage (12 or 24VDC)



Options

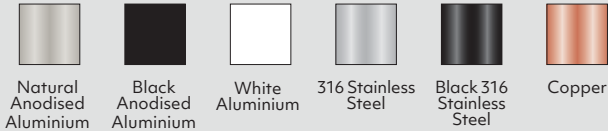
Beam angle



CCT



Trim colour



CRI

Professional series (P) CRI 90

230VAC power supply included

SL900 M-LIGHTZ – constant current

White | Natural | Black - Max 500mA dimmable.

SS | Stainless Black | Copper - Max 350mA non-dimmable*.

*Optional dimming driver ordered separately

Contact Switch Lighting for Casambi Smart Control options.

12 or 24VDC power supply

Ordered separately

SL910 M-LIGHTZ – constant voltage

requires a power supply with 12 or 24VDC output.

Q4-12V-20W (IP20) 1-3 lights in parallel

SLDV-12V-40W (IP67) 1-6 lights in parallel

Please refer online for cable size requirements (voltage drop)



Scan to view driver options

Product information

Table is based on: 3000K

Contact Switch Lighting for data of other variants

Model	System power (W)	Luminaire power (W)	Forward voltage (V _f)	Delivered lumens (lm)	Insulation coverable		
					NZ	AU	UK/EU
SL900 white/natural/black	6.25	5	9.5	400	IC-F	IC-4	✓
SL900 SS/SS black/copper	4.4	3.5	9.5	290	IC-F	IC-4	✓
SL910 white/natural/black	N/A	4.2	11-30	320	IC-F	IC-4	✓
SL910 SS/SS black/copper	N/A	3.6	11-30	270	IC-F	IC-4	✓



Size 54x33mm



Cut-out Ø44-46mm



Hole depth >40mm



SL900 Front



SL910 Front & rear

How to specify M-LIGHTZ

Please confirm model option availability from our website. **Note: SL910 power supply is ordered separately.**

e.g. code = **SL900-45-30-P-N**

Model	Beam	CCT	CRI	Trim Colour	Market
SL900	22 = 22° 38 = 38° 45 = 45°	27 = 2700K 30 = 3000K 40 = 4000K	P = 90	N = Natural Anodised Aluminium B = Black Anodised Aluminium W = White Aluminium SS = 316 Stainless Steel SB = Black 316 Stainless Steel C = Copper	1 = NZ 2 = Aust 3 = EU
SL910					

Please see www.switch-lighting.co.nz for specifications, lux levels, SDoCs, ies files and installation instructions.



Warranty
5 Years

L70 (50,000h)



M-LIGHTZ Cabinet



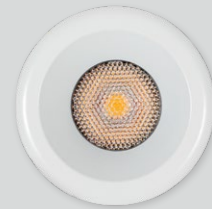
Nelson private residence
Tasman Sparkies



Natural Anodised
Aluminium



Black Anodised
Aluminium



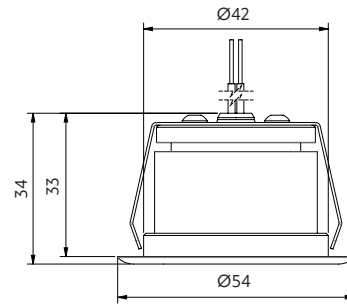
White
Aluminium





M-LIGHTZ Cabinet

- + provides practical illumination in cabinets & display areas
- + use for wardrobes, kitchen cabinets, storage areas
- + use indoors for feature lighting
- + IP67 front
- + constant current (Max 500mA)



Options

Beam angle



45°

CCT



2700K



3000K



4000K

CRI

Professional series (P) CRI 90

Trim colour

Natural
Anodised
AluminiumBlack
Anodised
AluminiumWhite
Aluminium

230VAC power supply – constant current included
500mA dimmable.

Contact Switch Lighting for Casambi Smart Control options.

Product information

Table is based on: 3000K

Contact Switch Lighting for data of other variants

Model	System power (W)	Luminaire power (W)	Forward voltage (V _f)	Delivered lumens (lm)	Insulation coverable		
					NZ	AU	UK/EU
SL901	6.25	5	9.5	400	IC-F	IC-4	✓



Size
54X53mm



Cut-out
Ø44-46mm



Hole depth
>40mm



Front

How to specify M-LIGHTZ Cabinet

Please confirm model option availability from our website.

e.g. code = **SL901-45-30-P-N**

Model	Beam	CCT	CRI	Trim Colour	Market
SL901	45 = 45°	27 = 2700K 30 = 3000K 40 = 4000K	P = 90	N = Natural Anodised Aluminium B = Black Anodised Aluminium W = White Aluminium	1 = NZ 1 = Aust 2 = UK 3 = EU

Please see www.switch-lighting.co.nz for specifications, lux levels, SDoCs, ies files and installation instructions.



Warranty
5 Years

L70 (50,000 h)



PURE COLOUR
HIGH CRI DOWNLIGHTS



Mini-LIGHTZ Friction Fit



SLSPK
Spike accessory



SLGL-GSB-25
Glare Shield accessory



SLSPK-2
Spike 2 accessory



SLSPK-2-Ext
Extender accessory
1-3 can be used
with Spike 2



Natural Anodised
Aluminium



Black Anodised
Aluminium



White
316 Stainless Steel



Copper

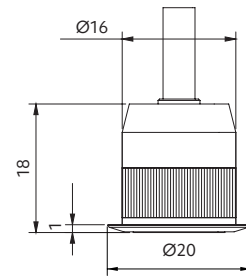


316 Stainless Steel





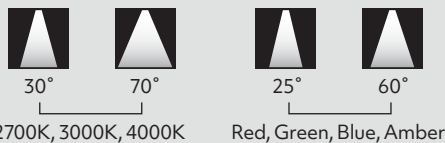
Mini-LIGHTZ Friction Fit



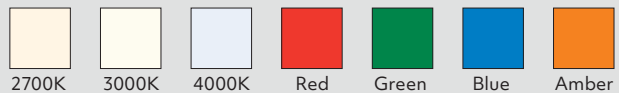
- + this versatile luminaire integrates into a multitude of architectural spaces
- + tiny form factor with a powerful 1W illumination
- + suitable for accent lighting indoors, including bathrooms
- + use outdoors for garden lighting / decks / under soffits
- + constant current (Max 350mA)

Options

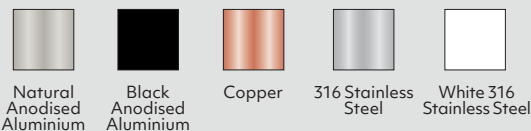
Beam angle



CCT



Trim colour



Power supply – constant current

Ordered separately

230VAC circuit (@350mA) only 2700K, 3000K, 4000K

1-4 lights	non-dimming Mini 350mA power supply
1-3 lights	TE dimmable SE-9-350-700
3-11 lights	TE dimmable SE-12-100-400
3-13 lights	TE dimmable SE-15-350-700
3-13 lights	dimmable SE-40-300-1050* (5-19 R, 3-12 G)

12 or 24VDC circuit – all types:

1-3 lights	LDD-350LW @ 12VDC
1-7 lights	LDD-350LW @ 24VDC

See driver options for coloured versions in Tips & Tricks on our website.

*1-10V, 0-10V, PWM, RX (variable resistor or rheostat)

Contact Switch Lighting for Casambi Smart Control options.

CRI

CRI 80 (2700K/3000K/4000K)



Glare Shield

SLGL-GSB-25 Black



Spike 2

212mm	
SLSPK-2-B	Black Anodised Aluminium
SLSPK-2-N	Natural Anodised Aluminium
SLSPK-2-C	Copper
SLSPK-2-SS	316 Stainless Steel

Original Spike

200mm	
SLSPK-B	
SLSPK-N	
SLSPK-C	
SLSPK-SS	



Extender for use with Spike 2

250mm	
SLSPK-2-Ext-B	Black Anodised Aluminium
SLSPK-2-Ext-N	Natural Anodised Aluminium
SLSPK-2-Ext-C	Copper
SLSPK-2-Ext-SS	316 Stainless Steel



Scan to view driver options

Product information

Table is based on: 2700K

Contact Switch Lighting for data of other variants

Luminaire power (W)	Delivered lumens (lm)	Forward voltage (V _f)	Insulation coverable		
			NZ	AU	UK/EU
1	115	3	IC-F	IC-4	✓

Product information

Table is based on: 25°

Contact Switch Lighting for data of other variants

Colour	Luminaire power (W)	Delivered lumens (lm)	Forward voltage (V _f)	Insulation coverable		
				NZ	AU	UK/EU
Red	1	47	3.2	IC-F	IC-4	✓
Green	1	100	3.2	IC-F	IC-4	✓
Blue	1	31	3.2	IC-F	IC-4	✓
Amber	1	91	3.2	IC-F	IC-4	✓

How to specify Mini-LIGHTZ Friction Fit

Please confirm model option availability from our website. **Note: driver is ordered separately.**

e.g. code = **SL201-70-27-N** (2700K, 3000K, 4000K); **SL201-25-R-N** (Red, Green, Blue, Amber)

Model	Beam	CCT	Trim Colour	Market
SL201	30 = 30° 70 = 70°	27 = 2700K 30 = 3000K 40 = 4000K	N = Natural Anodised Aluminium B = Black Anodised Aluminium W = White 316 Stainless Steel SS = 316 Stainless Steel C = Copper	N = NZ 1 = Aust 2 = UK 3 = EU
SL201 (colours)	25 = 25° 60 = 60°	R = Red G = Green B = Blue A = Amber		



Size 20x18mm



Cut-out Ø16mm



Hole depth >26mm



Please see www.switch-lighting.co.nz for specifications, lux levels, SDoCs, ies files and installation instructions.

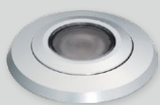
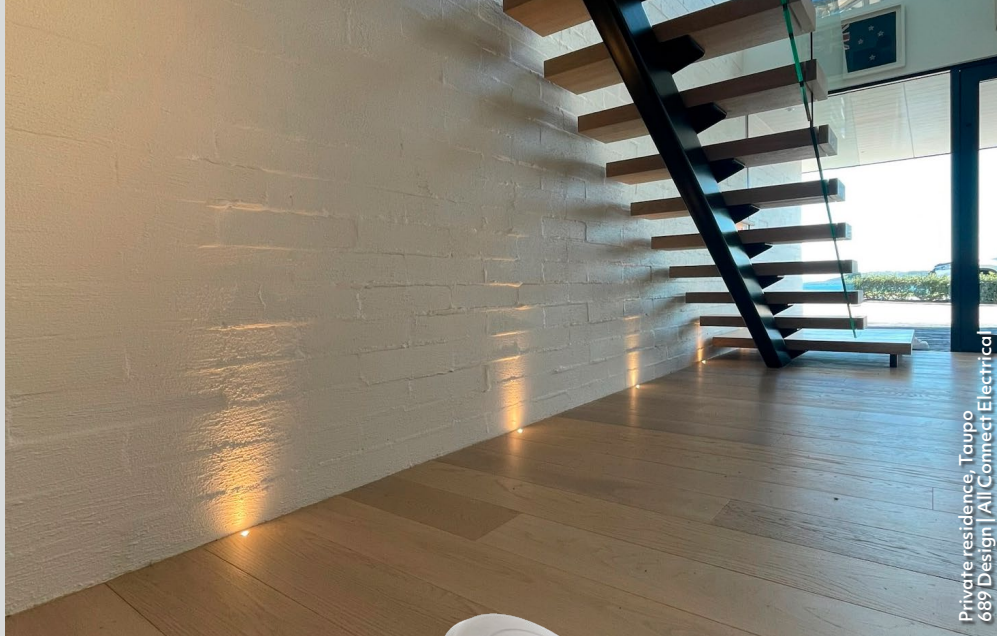


Warranty 5 Years

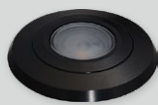
L70 (60,000 h)



Mini-LIGHTZ Spring Mount



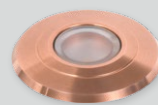
Natural Anodised
Aluminium



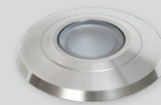
Black Anodised
Aluminium



White
316 Stainless Steel



Copper



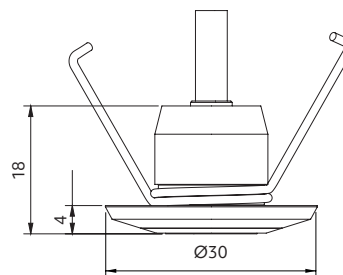
316 Stainless Steel





Mini-LIGHTZ Spring Mount

- + accentuate and elevate the aesthetic appeal of any environment
- + tiny form factor with a powerful 1W illumination
- + suitable for accent lighting indoors, including bathrooms
- + use outdoors for garden lighting / decks / under soffits
- + ideal for fitting into plasterboard
- + constant current (Max 350mA)



Options

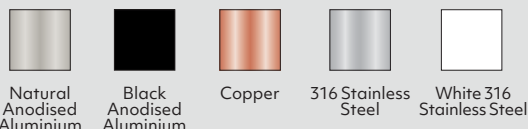
Beam angle



CCT



Trim colour



CRI

CRI 80

Power supply – constant current

Ordered separately

230VAC circuit (@350mA) only 2700K, 3000K, 4000K

- 1-4 lights non-dimming Mini 350mA power supply
- 1-3 lights TE dimmable SE-9-350-700
- 3-11 lights TE dimmable SE-12-100-400
- 3-13 lights TE dimmable SE-15-350-700
- 3-13 lights dimmable SE-40-300-1050* (5-19 R, 3-12 G)

12 or 24VDC circuit – all types:

- 1-3 lights LDD-350LW @ 12VDC
- 1-7 lights LDD-350LW @ 24VDC

Contact Switch Lighting for Casambi Smart Control options.



See driver options for coloured versions in Tips & Tricks on our website.
*1-10V, 0-10V, PWM, RX (variable resistor or rheostat)

Scan to view driver options

Product information

Table is based on: 2700K

Contact Switch Lighting for data of other variants

Luminaire power (W)	Delivered lumens (lm)	Forward voltage (V _f)	Insulation coverable		
			NZ	AU	UK/EU
1	115	3	IC-F	IC-4	✓

Product information

Table is based on: 25°

Contact Switch Lighting for data of other variants

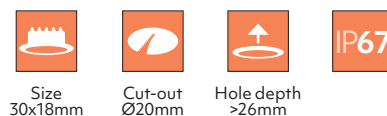
Colour	Luminaire power (W)	Delivered lumens (lm)	Forward voltage (V _f)	Insulation coverable		
				NZ	AU	UK/EU
Red	1	47	3.2	IC-F	IC-4	✓
Green	1	100	3.2	IC-F	IC-4	✓
Blue	1	31	3.2	IC-F	IC-4	✓
Amber	1	91	3.2	IC-F	IC-4	✓

How to specify Mini-LIGHTZ Spring Mount

Please confirm model option availability from our website. **Note: driver is ordered separately.**

e.g. code = **SL211-70-27-N** (2700K, 3000K, 4000K); **SL211-25-R-N** (Red, Green, Blue, Amber)

Model	Beam	CCT	Trim Colour	Market
SL211	30 = 30° 70 = 70°	27 = 2700K 30 = 3000K 40 = 4000K	N = Natural Anodised Aluminium B = Black Anodised Aluminium W = White 316 Stainless Steel SS = 316 Stainless Steel C = Copper	N = NZ 1 = Aust 2 = UK 3 = EU
SL211 (colours)	25 = 25° 60 = 60°	R = Red G = Green B = Blue A = Amber		



Please see www.switch-lighting.co.nz for specifications, lux levels, SDCs, ies files and installation instructions.

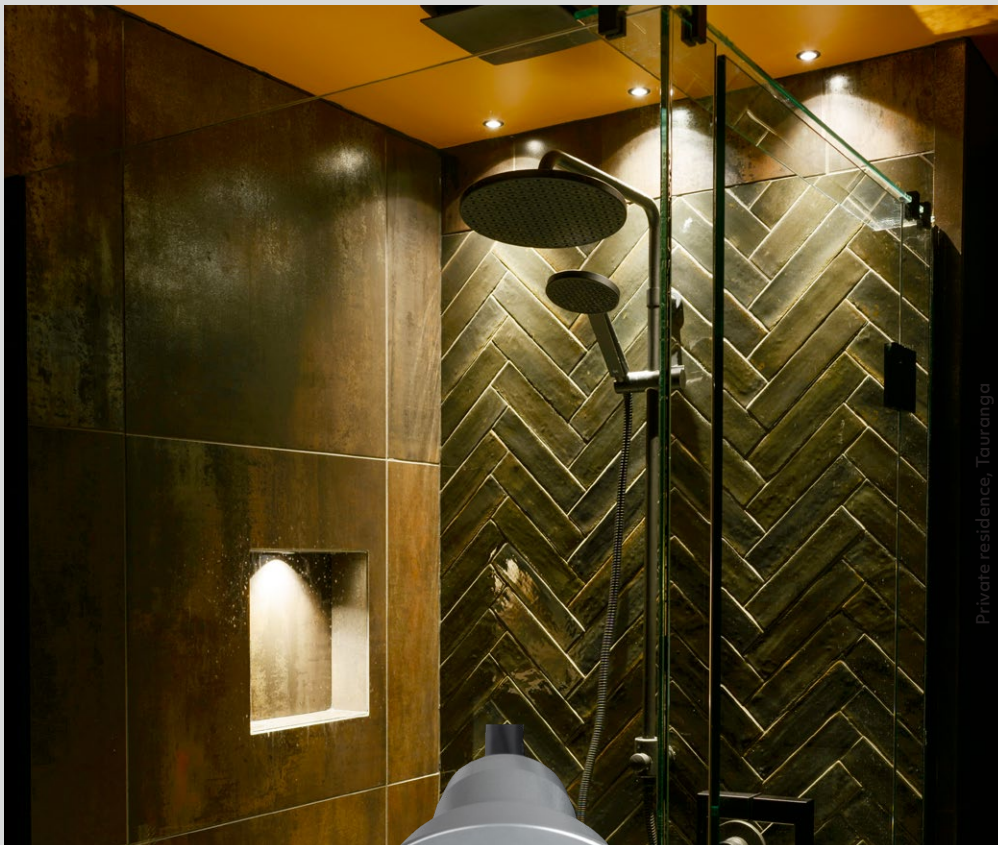


Warranty
5 Years

L70 (60,000 h)



Mini-LIGHTZ Deep Fixed



Private residence, Tauranga



SLDL624F



Natural Anodised
Aluminium



Black Anodised
Aluminium



316 Stainless Steel



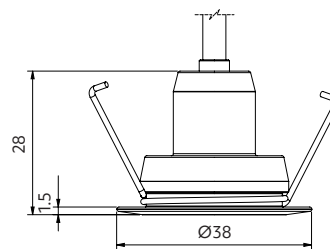
White
316 Stainless Steel





Mini-LIGHTZ Deep Fixed

- + enhance visual charm with its unobtrusive, deep recessed design
- + tiny form factor 1W/2.2W
- + suitable for accent lighting indoors, including bathrooms
- + use outdoors under soffits
- + IP67
- + constant current (Max 700mA)

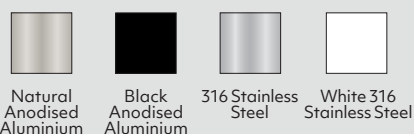


Options

Beam angle



Trim colour



CCT



CRI

CRI 80 (2700K/3000K/4000K)

Use with

LED protector to protect from power and wiring hazards
Waterproof cable connectors

Power supply – constant current

Ordered separately

1W - 350mA

230VAC circuit (@350mA) only 2700K, 3000K, 4000K
 1-4 lights non-dimming Mini 350mA power supply
 1-3 lights TE dimmable SE-9-350-700
 3-11 lights TE dimmable SE-12-100-400
 3-13 lights TE dimmable SE-15-350-700
 3-13 lights dimmable SE-40-300-1050* (5-19 R, 3-12 G)

12 or 24VDC circuit – all types:

1-3 lights LDD-350LW @ 12VDC
 1-7 lights LDD-350LW @ 24VDC

2.1W - 700mA

230VAC circuit (@700mA) only 2700K, 3000K, 4000K
 1-3 lights TE dimmable SE-9-350-700
 3-6 lights TE dimmable SE-15-350-700
 3-13 lights TE dimmable SE-40-300-1050* (5-19 R, 3-12 G)*

12 or 24VDC circuit – only 2700K, 3000K, 4000K

1-3 lights LDD-700LW power supply @ 12VDC
 1-6 lights LDD-700LW power supply @ 24VDC

See driver options for coloured versions in Tips & Tricks on our website.
 *1-10V, 0-10V, PWM, RX (variable resistor or rheostat)

Contact Switch Lighting for Casambi
 Smart Control options.

Scan to view driver options



Product information

Table is based on: 3000K
 Contact Switch Lighting for data of other variants

Driver (mA)	Luminaire power (W)	Delivered lumens (lm)	Forward voltage (V _f)	Insulation coverable		
				NZ	AU	UK/EU
350	1	115	3	IC-F	IC-4	✓
700	2.1	215	3	IC-F	IC-4	✓



How to specify Mini-LIGHTZ Deep Fixed

Please confirm model option availability from our website. **Note: driver is ordered separately.**

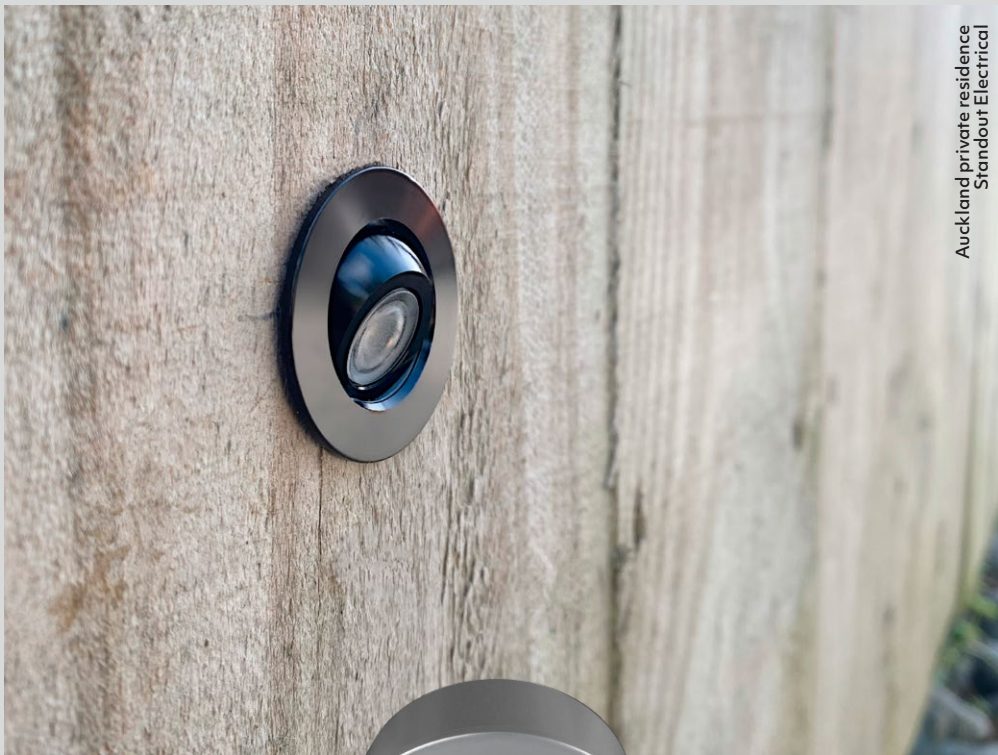
e.g. code = **SLDL624F-6027C-N** (2700K, 3000K, 4000K); **SLDL624F-25-R-N** (Red, Green, Blue, Amber)

Model	Beam	CCT	Series	Trim Colour	Market								
SLDL624F	25 = 25° 60 = 60°	27 = 2700K 30 = 3000K 40 = 4000K	C = Classic	N = Natural Aluminium B = Black Anodised Aluminium SS = 316 Stainless Steel W = White 316 Stainless Steel	<table border="1"> <tr><td>○</td><td>= NZ</td></tr> <tr><td>1</td><td>= Aust</td></tr> <tr><td>2</td><td>= UK</td></tr> <tr><td>3</td><td>= EU</td></tr> </table>	○	= NZ	1	= Aust	2	= UK	3	= EU
○	= NZ												
1	= Aust												
2	= UK												
3	= EU												
SLDL624F	25 = 25° 60 = 60°	R = Red G = Green B = Blue A = Amber		N = Natural Aluminium B = Black Anodised Aluminium SS = 316 Stainless Steel W = White 316 Stainless Steel	<table border="1"> <tr><td>○</td><td>= NZ</td></tr> <tr><td>1</td><td>= Aust</td></tr> <tr><td>2</td><td>= UK</td></tr> <tr><td>3</td><td>= EU</td></tr> </table>	○	= NZ	1	= Aust	2	= UK	3	= EU
○	= NZ												
1	= Aust												
2	= UK												
3	= EU												

Please see www.switch-lighting.co.nz for specifications, lux levels, SDoCs, ies files and installation instructions.



Mini-LIGHTZ *Tilt*



Auckland private residence
Standout Electrical



SLDL644T



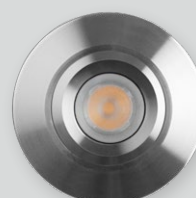
Natural Anodised
Aluminium



Black Anodised
Aluminium



White
316 Stainless Steel



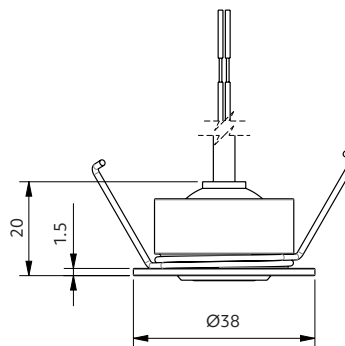
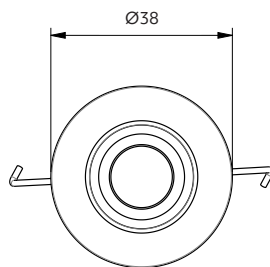
316 Stainless Steel



Scan to view website

Mini-LIGHTZ *Tilt*

- + create captivating directional visual effects
- + tiny form factor 1W/2.2W
- + suitable for indoor and outdoor use
- + 360° gimbal
- + constant current (Max 700mA)

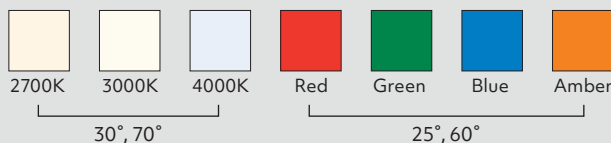


Options

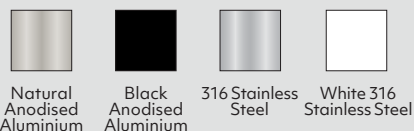
Beam angle



CCT



Trim colour



CRI

CRI 80 (2700K/3000K/4000K)

Use with

LED protector to protect from power and wiring hazards
Waterproof cable connectors

Power supply – constant current

Ordered separately

1W - 350mA

12 or 24VDC circuit – all types:

- 1-3 lights LDD-350LW @ 12VDC
- 1-7 lights LDD-350LW @ 24VDC
- 1-11 lights (max) LDB-300LW @ 12 or 24VDC

230VAC circuit (@350mA) only 2700K, 3000K, 4000K

- 1-4 lights non-dimming Mini 350mA power supply
- 1-3 lights TE dimmable SE-9-350-700
- 3-11 lights TE dimmable SE-12-100-400
- 3-13 lights TE dimmable SE-15-350-700
- 3-13 lights dimmable SE-40-300-1050* (5-19 R, 3-12 G)

2.1W - 700mA

12 or 24VDC circuit – only 2700K, 3000K, 4000K

- 1-3 lights LDD-700LW power supply @ 12VDC
- 1-6 lights LDD-700LW power supply @ 24VDC

230VAC circuit (@700mA) only 2700K, 3000K, 4000K

- 1-3 lights TE dimmable SE-9-350-700
- 3-6 lights TE dimmable SE-15-350-700
- 3-13 lights TE dimmable SE-40-300-1050* (5-19 R, 3-12 G)

See driver options for coloured versions in Tips & Tricks on our website.

*1-10V, 0-10V, PWM, RX (variable resistor or rheostat)

Contact Switch Lighting for Casambi Smart Control options.

Scan to view driver options



Product information

Table is based on: 3000K

Contact Switch Lighting for data of other variants

Driver (mA)	Luminaire power (W)	Delivered lumens (lm)	Forward voltage (V _f)	Insulation coverable		
				NZ	AU	UK/EU
350	1	115	3	IC-F	IC-4	✓
700	2.1	215	3	IC-F	IC-4	✓



Tilt Angle 40°



Size 38x20mm



Cut-out Ø32mm



Hole depth >32mm



How to specify Mini-LIGHTZ Tilt

Please confirm model option availability from our website. **Note: driver is ordered separately.**

e.g. code = **SLDL644T-7027C-N** (2700K, 3000K, 4000K); **SLDL644T-25-R-N** (Red, Green, Blue, Amber)

Model	Beam	CCT	Series	Trim Colour	Market
SLDL644T	30 = 30° 70 = 70°	27 = 2700K 30 = 3000K 40 = 4000K	C = Classic	N = Natural Anodised Aluminium B = Black Anodised Aluminium W = White 316 Stainless Steel SS = 316 Stainless Steel	NZ 1 = Aust 2 = UK 3 = EU
SLDL644T	25 = 25° 60 = 60°	R = Red G = Green B = Blue A = Amber		N = Natural Anodised Aluminium B = Black Anodised Aluminium W = White 316 Stainless Steel SS = 316 Stainless Steel	NZ 1 = Aust 2 = UK 3 = EU

Please see www.switch-lighting.co.nz for specifications, lux levels, SDoCs, ies files and installation instructions.



Warranty 5 Years

L70 (60,000h)

