

Multi-LIGHTZ



Design Builders, Petone, Wellington



70° Trim



Eyelid Trim
(Shown Actual Size)



90° Trim



Matt Black
316 Stainless Steel



Matt Bronze
316 Stainless Steel



Black
316 Stainless Steel



316
Stainless Steel



Matt
316 Stainless Steel



White
316 Stainless Steel



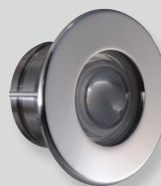
Matt Black
316 Stainless Steel



Matt Bronze
316 Stainless Steel



Black
316 Stainless Steel



316
Stainless Steel



Matt
316 Stainless Steel



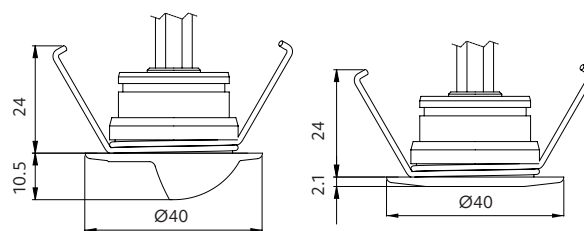
White
316 Stainless Steel





Multi-LIGHTZ

- + a versatile luminaire to elevate interior & exterior space
- + dimmable constant current
- + use outdoors on steps / paths / deck lighting
- + use indoors on stairs / hallways / ambient lighting
- + 316 stainless steel
- + IP67
- + over voltage protection for constant voltage
- + constant voltage (12VDC) / constant current (Max 500mA)

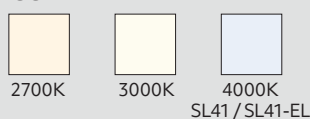


Options

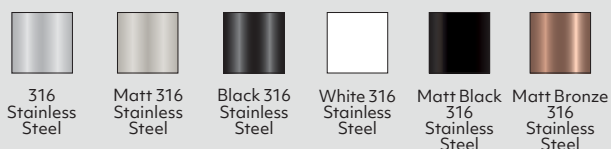
Beam angle



CCT



Trim colour



CRI

CRI 80

Power Supply - Constant Current (SL42) 230VAC Circuit

Driver ordered separately
Max 500mA
See Tips and Tricks on our website for driver options.

Power Supply - Constant Voltage (SL41) 12VDC Circuit

Driver ordered separately
Q4-12V-20W (IP20) 1-11 lights in parallel
SLDV-12V-40W (IP67) 1-21 lights in parallel
SLDV-12V-75W (IP67) 1-45 lights in parallel
Higher output power supplies available
Please refer online for cable size requirements (voltage drop)



Contact Switch Lighting for Casambi Smart Control options.

Scan to view driver options

Product information

Table is based on: 2700K
Contact Switch Lighting for data of other variants

Model	Luminaire power (W)	Forward voltage (V _f)	Delivered lumens (lm)	Insulation coverable		
				NZ	AU	UK/EU
SL41 constant voltage (CV)	1.6 (130mA)	11-13	100	IC-F	IC-4	✓
SL42 constant current (CC)	1.5 (500mA)	3	150	IC-F	IC-4	✓



Size
40x24mm



Cut-out
Ø32mm



Hole depth
>40mm



IP67

How to specify Multi-LIGHTZ

Please confirm model option availability from our website. **Note: driver is ordered separately.**

e.g. code = **SL41-70-27-SS**

Model	Beam	CCT	Trim Colour	Market
SL41 = Constant voltage SL42 = Constant current	70 = 70° 90 = 90° EL = Eyelid	27 = 2700K 30 = 3000K 40 = 4000K (SL41 / SL41-EL only)	SS = 316 Stainless Steel MS = Matt 316 Stainless Steel B = Black 316 Stainless Steel W = White 316 Stainless Steel MB = Matt Black 316 Stainless Steel MZ = Matt Bronze 316 Stainless Steel	1 = NZ 2 = UK 3 = EU

Please see www.switch-lighting.co.nz for specifications, lux levels, SDoCs, ies files and installation instructions.



Warranty
5 Years

L70 (50,000 h)

