

# Multi-LIGHTZ



Design Builders, Petone, Wellington



**SL41-EL Constant Voltage  
SL42-EL Constant Current**

Matt 316 Stainless Steel



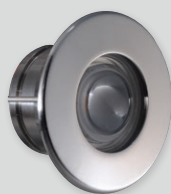
**SL41-EL Constant Voltage  
SL42-EL Constant Current  
Eyelid**

Black 316 Stainless Steel



**SL41-EL Constant Voltage  
SL42-EL Constant Current  
Eyelid**

White 316 Stainless Steel



**SL41 Constant Voltage  
SL42 Constant Current  
Beam 70°**

316 Stainless Steel



**SL41 Constant Voltage  
SL42 Constant Current  
Beam 90°**

Matt 316 Stainless Steel



**SL41 Constant Voltage  
SL42 Constant Current  
Beam 90°**

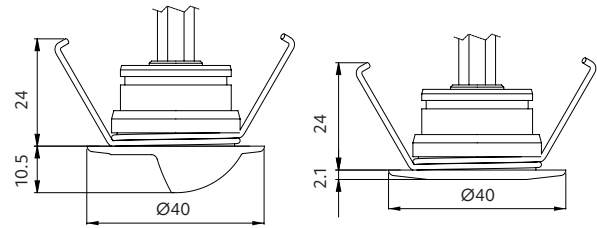
White 316 Stainless Steel





# Multi-LIGHTZ

- + a versatile luminaire to elevate interior & exterior space
- + dimmable constant current
- + use outdoors on steps / paths / deck lighting
- + use indoors on stairs / hallways / ambient lighting
- + 316 stainless steel
- + IP67
- + over voltage protection for constant voltage
- + constant voltage (12VDC) / constant current (Max 500mA)



## Options

### Beam angle



70°



90°



Eyelid

### Trim colour

316  
Stainless  
SteelMatt 316  
Stainless  
SteelBlack 316  
Stainless  
SteelWhite 316  
Stainless  
Steel

### CCT



2700K



3000K

4000K  
SL41 / SL41-EL

### CRI

CRI 80

### 230VAC power supply – constant current (SL42)

Ordered separately

Max 500mA

See Tips and Tricks on our website for driver options.

### 12VDC power supply – constant voltage (SL41)

Ordered separately

Q4-12V-20W (IP20)

1-11 lights in parallel

SLDV-12V-40W (IP67)

1-21 lights in parallel

SLDV-12V-75W (IP67)

1-45 lights in parallel

Higher output power supplies available

Please refer online for cable size requirements

(voltage drop)

Contact Switch Lighting for Casambi Smart Control options.



Scan to view driver options

## Product information

### Example: 2700K

Contact Switch Lighting for data of other variants

Model	Luminaire power (W)	Forward voltage (V <sub>f</sub> )	Delivered lumens (lm)	Insulation coverable		
				NZ	AU	UK/EU
SL41 constant voltage (CV)	1.6 (130mA)	11-13	100	IC-F	IC-4	✓
SL42 constant current (CC)	1.5 (500mA)	3	150	IC-F	IC-4	✓

Size  
40x24mmCut-out  
Ø32mmHole depth  
>40mm

IP67

## how to specify Multi-LIGHTZ

Please confirm model option availability from our website. **Note: driver is ordered separately.**e.g. code = **SL41-70-27-SS**

Model	Beam	CCT	Trim Colour	Market
SL41 = Constant voltage SL42 = Constant current	70 = 70° 90 = 90° EL = Eyelid	27 = 2700K 30 = 3000K 40 = 4000K (SL41 / SL41-EL only)	SS = 316 Stainless Steel MS = Matt 316 Stainless Steel B = Black 316 Stainless Steel W = White 316 Stainless Steel	1 = NZ 1 = Aust 2 = UK 3 = EU

Please see [www.switch-lighting.co.nz](http://www.switch-lighting.co.nz) for specifications, lux levels, SDoCs, ies files and installation instructions.Warranty  
5 Years

L70 (50,000 h)

