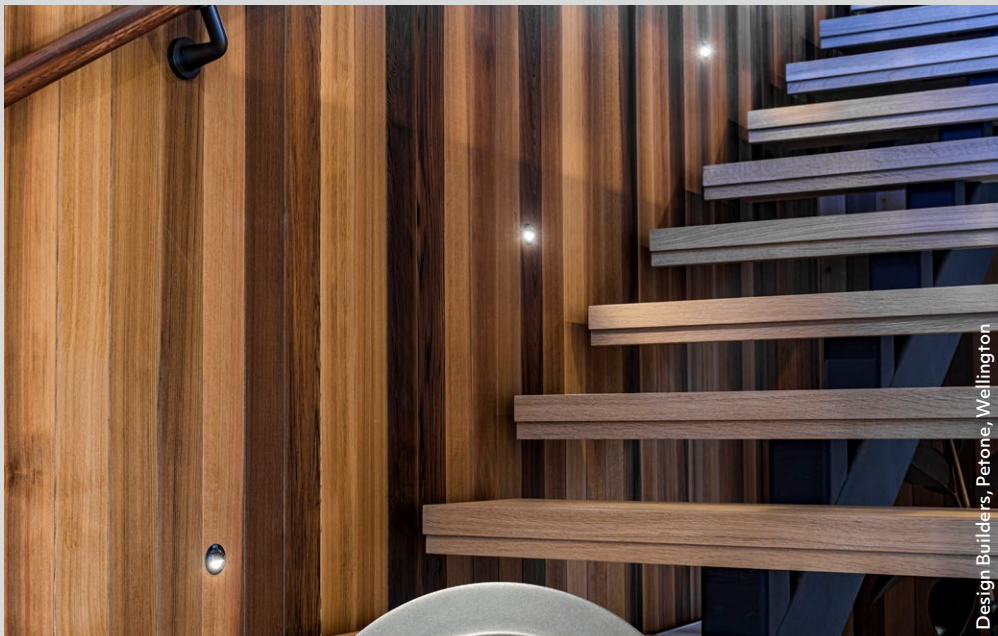


Multi-LIGHTZ



SL41-EL Constant Voltage
SL42-EL Constant Current

Matt 316 Stainless Steel



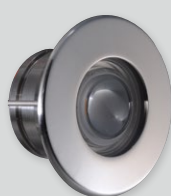
SL41-EL Constant Voltage
SL42-EL Constant Current
Eyelid

Black 316 Stainless Steel



SL41-EL Constant Voltage
SL42-EL Constant Current
Eyelid

White 316 Stainless Steel



SL41 Constant Voltage
SL42 Constant Current
Beam 70°

316 Stainless Steel



SL41 Constant Voltage
SL42 Constant Current
Beam 90°

Matt 316 Stainless Steel



SL41 Constant Voltage
SL42 Constant Current
Beam 90°

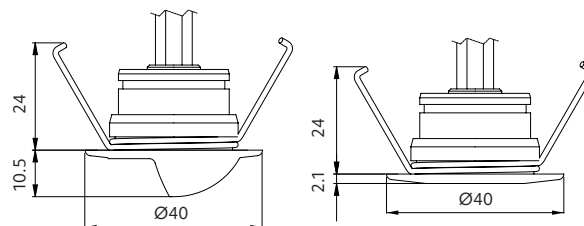
White 316 Stainless Steel





Multi-LIGHTZ

- + a versatile luminaire to elevate interior & exterior space
- + dimmable constant current
- + use outdoors on steps / paths / deck lighting
- + use indoors on stairs / hallways / ambient lighting
- + 316 stainless steel
- + IP67
- + over voltage protection for constant voltage
- + constant voltage (12VDC) / constant current (Max 500mA)



Options

Beam angle



70°



90°



Eyelid

Trim colour

316
Stainless
SteelMatt 316
Stainless
SteelBlack 316
Stainless
SteelWhite 316
Stainless
Steel

CCT



2700K



3000K

4000K
SL41 / SL41-EL

CRI

CRI 80

230VAC power supply – constant current (SL42)

Ordered separately

Max 500mA

See Tips and Tricks on our website for driver options.

12VDC power supply – constant voltage (SL41)

Ordered separately

Q4-12V-20W (IP20)

1-11 lights in parallel

SLDV-12V-40W (IP67)

1-21 lights in parallel

SLDV-12V-75W (IP67)

1-45 lights in parallel

Higher output power supplies available

Please refer online for cable size requirements (voltage drop)

Contact Switch Lighting for Casambi Smart Control options.



Scan to view driver options

Product information

Example: 2700K

Contact Switch Lighting for data of other variants

Model	Luminaire power (W)	Forward voltage (V _f)	Delivered lumens (lm)	Insulation coverable		
				NZ	AU	UK/EU
SL41 constant voltage (CV)	1.6 (130mA)	11-13	100	IC-F	IC-4	✓
SL42 constant current (CC)	1.5 (500mA)	3	150	IC-F	IC-4	✓

Size
40x24mmCut-out
Ø32mmHole depth
>40mm

IP67

how to specify Multi-LIGHTZ

Please confirm model option availability from our website. **Note: driver is ordered separately.**e.g. code = **SL41-70-27-SS**

Model	Beam	CCT	Trim Colour	Market
SL41 = Constant voltage SL42 = Constant current	70 = 70° 90 = 90° EL = Eyelid	27 = 2700K 30 = 3000K 40 = 4000K (SL41 / SL41-EL only)	SS = 316 Stainless Steel MS = Matt 316 Stainless Steel B = Black 316 Stainless Steel W = White 316 Stainless Steel	■ = NZ 1 = Aust 2 = UK 3 = EU

Please see www.switch-lighting.co.nz for specifications, lux levels, SDoCs, ies files and installation instructions.
Warranty
5 Years

L70 (50,000 h)
