

Mini-LIGHTZ Friction Fit



Stonyridge Vineyard, Waheke
Calmain Electrical



SLSPK
Spike accessory



SLSPK-2
Spike 2 accessory



SLSPK-2-EXT
Extender accessory
1-3 can be used
with Spike 2



Natural Anodised
Aluminium



Black Anodised
Aluminium



White
316 Stainless Steel



Copper



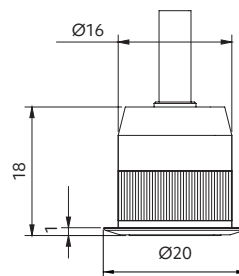
316 Stainless Steel





Mini-LIGHTZ Friction Fit

- + this versatile luminaire integrates into a multitude of architectural spaces
- + tiny form factor with a powerful 1W illumination
- + suitable for accent lighting indoors, including bathrooms
- + use outdoors for garden lighting / decks / under soffits
- + constant current (Max 350mA)



Options

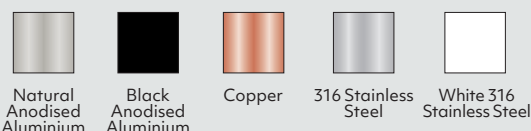
Beam angle



CCT



Trim colour



Power supply – constant current

Ordered separately

230VAC circuit (@350mA) only 2700K, 3000K, 4000K

1-4 lights	non-dimming Mini 350mA power supply
1-3 lights	TE dimmable SE-9-350-700
3-11 lights	TE dimmable SE-12-100-400
3-13 lights	TE dimmable SE-15-350-700
3-13 lights	dimmable SE-40-300-1050* (5-19 R, 3-12 G)

12 or 24VDC circuit – all types:

1-3 lights	LDD-350LW @ 12VDC
1-7 lights	LDD-350LW @ 24VDC

See driver options for coloured versions in Tips & Tricks on our website.

*1-10V, 0-10V, PWM, RX (variable resistor or rheostat)

Contact Switch Lighting for Casambi Smart Control options.

CRI

CRI 80 (2700K/3000K/4000K)



Spike 2

212mm	
SLSPK-2-B	Black Anodised Aluminium
SLSPK-2-N	Natural Anodised Aluminium
SLSPK-2-C	Copper
SLSPK-2-SS	316 Stainless Steel

Original Spike

200mm	
SLSPK-B	
SLSPK-N	
SLSPK-C	
SLSPK-SS	



Extender for use with Spike 2

250mm	
SLSPK-2-Ext-B	Black Anodised Aluminium
SLSPK-2-Ext-N	Natural Anodised Aluminium
SLSPK-2-Ext-C	Copper
SLSPK-2-Ext-SS	316 Stainless Steel



Scan to view driver options

Product information

Example: 2700K

Contact Switch Lighting for data of other variants

Luminaire power (W)	Delivered lumens (lm)	Forward voltage (V _f)	Insulation coverable		
			NZ	AU	UK/EU
1	115	3	IC-F	IC-4	✓

Product information

Example: 25°

Contact Switch Lighting for data of other variants

Colour	Luminaire power (W)	Delivered lumens (lm)	Forward voltage (V _f)	Insulation coverable		
				NZ	AU	UK/EU
Red	1	47	3.2	IC-F	IC-4	✓
Green	1	100	3.2	IC-F	IC-4	✓
Blue	1	31	3.2	IC-F	IC-4	✓
Amber	1	91	3.2	IC-F	IC-4	✓

how to specify Mini-LIGHTZ Friction Fit

Please confirm model option availability from our website. **Note: driver is ordered separately.**

e.g. code = **SL201-70-27-N** (2700K, 3000K, 4000K); **SL201-25-R-N** (Red, Green, Blue, Amber)

Model	Beam	CCT	Trim Colour	Market
SL201	30 = 30° 70 = 70°	27 = 2700K 30 = 3000K 40 = 4000K	N = Natural Anodised Aluminium B = Black Anodised Aluminium W = White 316 Stainless Steel SS = 316 Stainless Steel C = Copper	N = NZ 1 = Aust 2 = UK 3 = EU
SL201 (colours)	25 = 25° 60 = 60°	R = Red G = Green B = Blue A = Amber		



Size 20x18mm



Cut-out Ø16mm



Hole depth >26mm



IP67

Please see www.switch-lighting.co.nz for specifications, lux levels, SDoCs, ies files and installation instructions.

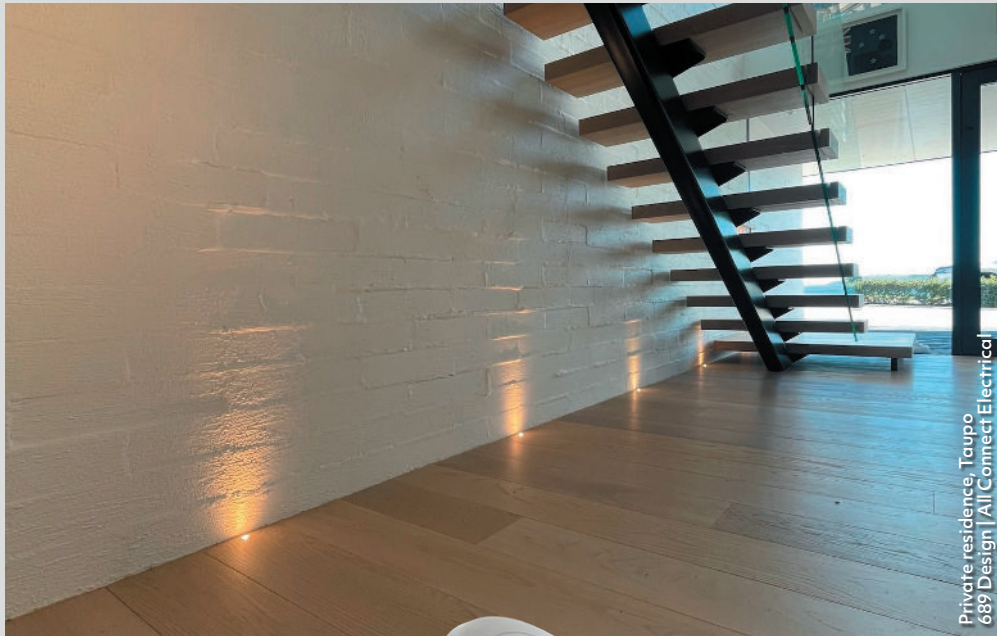


Warranty 5 Years

L70 (60,000 h)



Mini-LIGHTZ Spring Mount



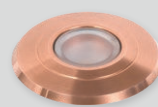
Natural Anodised
Aluminium



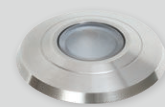
Black Anodised
Aluminium



White
316 Stainless Steel



Copper



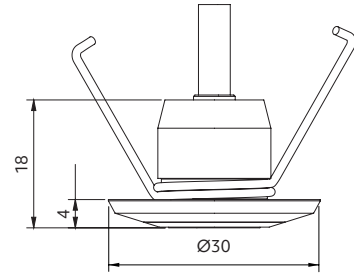
316 Stainless Steel





Mini-LIGHTZ Spring Mount

- + accentuate and elevate the aesthetic appeal of any environment
- + tiny form factor with a powerful 1W illumination
- + suitable for accent lighting indoors, including bathrooms
- + use outdoors for garden lighting / decks / under soffits
- + ideal for fitting into plasterboard
- + constant current (Max 350mA)



Options

Beam angle



30° 70°

2700K, 3000K, 4000K



25° 60°

Red, Green, Blue, Amber

Trim colour



Natural Anodised Aluminium



Black Anodised Aluminium



Copper



316 Stainless Steel



White 316 Stainless Steel

CCT



2700K



3000K



4000K



Red



Green



Blue



Amber

CRI

CRI 80

Power supply – constant current

Ordered separately

230VAC circuit (@350mA) only 2700K, 3000K, 4000K

1-4 lights non-dimming Mini 350mA power supply

1-3 lights TE dimmable SE-9-350-700

3-11 lights TE dimmable SE-12-100-400

3-13 lights TE dimmable SE-15-350-700

3-13 lights dimmable SE-40-300-1050* (5-19 R, 3-12 G)

12 or 24VDC circuit – all types:

1-3 lights LDD-350LW @ 12VDC

1-7 lights LDD-350LW @ 24VDC

Contact Switch Lighting for Casambi Smart Control options.



See driver options for coloured versions in Tips & Tricks on our website.
*1-10V, 0-10V, PWM, RX (variable resistor or rheostat)

Scan to view driver options

Product information

Example: 2700K

Contact Switch Lighting for data of other variants

Luminaire power (W)	Delivered lumens (lm)	Forward voltage (V _f)	Insulation coverable		
			NZ	AU	UK/EU
1	115	3	IC-F	IC-4	✓

Product information

Example: 25°

Contact Switch Lighting for data of other variants

Colour	Luminaire power (W)	Delivered lumens (lm)	Forward voltage (V _f)	Insulation coverable		
				NZ	AU	UK/EU
Red	1	47	3.2	IC-F	IC-4	✓
Green	1	100	3.2	IC-F	IC-4	✓
Blue	1	31	3.2	IC-F	IC-4	✓
Amber	1	91	3.2	IC-F	IC-4	✓

how to specify Mini-LIGHTZ Spring Mount

Please confirm model option availability from our website. **Note: driver is ordered separately.**

e.g. code = **SL211-70-27-N** (2700K, 3000K, 4000K); **SL211-25-R-N** (Red, Green, Blue, Amber)

Model	Beam	CCT	Trim Colour	Market
SL211	30 = 30° 70 = 70°	27 = 2700K 30 = 3000K 40 = 4000K	N = Natural Anodised Aluminium B = Black Anodised Aluminium W = White 316 Stainless Steel SS = 316 Stainless Steel C = Copper	N = NZ 1 = Aust 2 = UK 3 = EU
SL211 (colours)	25 = 25° 60 = 60°	R = Red G = Green B = Blue A = Amber		



Size 30x18mm



Cut-out Ø20mm



Hole depth >26mm



Please see www.switch-lighting.co.nz for specifications, lux levels, SDCs, ies files and installation instructions.



Warranty
5 Years

L70 (60,000 h)

