

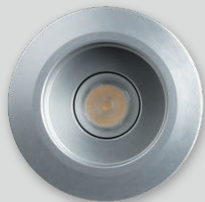
# Mini-LIGHTZ Deep Fixed



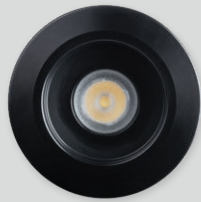
Switch Lighting Christchurch showroom  
Inception Electrical



SLDL624F



Natural Anodised  
Aluminium



Black Anodised  
Aluminium



316 Stainless Steel



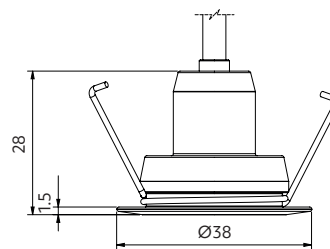
White  
316 Stainless Steel





# Mini-LIGHTZ Deep Fixed

- + enhance visual charm with its unobtrusive, deep recessed design
- + tiny form factor 1W/2.2W
- + suitable for accent lighting indoors, including bathrooms
- + use outdoors under soffits
- + IP67
- + constant current (Max 700mA)

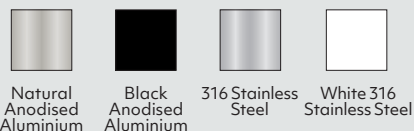


## Options

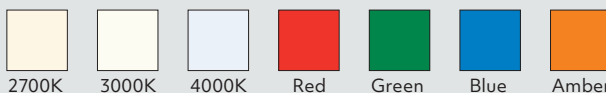
### Beam angle



### Trim colour



### CCT



### CRI

CRI 80 (2700K/3000K/4000K)

### Use with

LED protector to protect from power and wiring hazards  
Waterproof cable connectors

### Power supply – constant current

Ordered separately

#### 1W - 350mA

- 230VAC circuit (@350mA) only 2700K, 3000K, 4000K**
- 1-4 lights non-dimming Mini 350mA power supply
  - 1-3 lights TE dimmable SE-9-350-700
  - 3-11 lights TE dimmable SE-12-100-400
  - 3-13 lights TE dimmable SE-15-350-700
  - 3-13 lights dimmable SE-40-300-1050\* (5-19 R, 3-12 G)

#### 12 or 24VDC circuit – all types:

- 1-3 lights LDD-350LW @ 12VDC
- 1-7 lights LDD-350LW @ 24VDC

#### 2.1W - 700mA

- 230VAC circuit (@700mA) only 2700K, 3000K, 4000K**
- 1-3 lights TE dimmable SE-9-350-700
  - 3-6 lights TE dimmable SE-15-350-700
  - 3-13 lights TE dimmable SE-40-300-1050\* (5-19 R, 3-12 G)\*

#### 12 or 24VDC circuit – only 2700K, 3000K, 4000K

- 1-3 lights LDD-700LW power supply @ 12VDC
- 1-6 lights LDD-700LW power supply @ 24VDC

See driver options for coloured versions in Tips & Tricks on our website.  
\*1-10V, 0-10V, PWM, RX (variable resistor or rheostat)

Contact Switch Lighting for Casambi  
Smart Control options.

Scan to view driver options



## Product information

Example: 3000K

Contact Switch Lighting for data of other variants

Driver (mA)	Luminaire power (W)	Delivered lumens (lm)	Forward voltage (V <sub>f</sub> )	Insulation coverable		
				NZ	AU	UK/EU
350	1	115	3	IC-F	IC-4	✓
700	2.1	215	3	IC-F	IC-4	✓



## how to specify Mini-LIGHTZ Deep Fixed

Please confirm model option availability from our website. **Note: driver is ordered separately.**

e.g. code = **SLDL624F-6027C-N** (2700K, 3000K, 4000K); **SLDL624F-25-R-N** (Red, Green, Blue, Amber)

Model	Beam	CCT	Series	Trim Colour	Market
<b>SLDL624F</b>	25 = 25° 60 = 60°	27 = 2700K 30 = 3000K 40 = 4000K	C = Classic	N = Natural Aluminium B = Black Anodised Aluminium SS = 316 Stainless Steel W = White 316 Stainless Steel	N = NZ 1 = Aust 2 = UK 3 = EU
<b>SLDL624F</b>	25 = 25° 60 = 60°	R = Red G = Green B = Blue A = Amber		N = Natural Aluminium B = Black Anodised Aluminium SS = 316 Stainless Steel W = White 316 Stainless Steel	N = NZ 1 = Aust 2 = UK 3 = EU

Please see [www.switch-lighting.co.nz](http://www.switch-lighting.co.nz) for specifications, lux levels, SDoCs, ies files and installation instructions.



Warranty  
5 Years

L70 (60,000 h)

