

M-LIGHTZ Cabinet



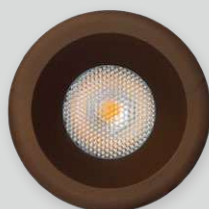
Nelson private residence
Tasman Sparkies



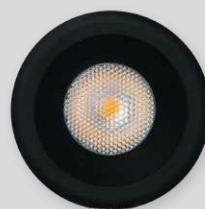
Natural Anodised
Aluminium



Black Anodised
Aluminium



Matt Bronze
Anodised
Aluminium



Matt Black
Anodised
Aluminium

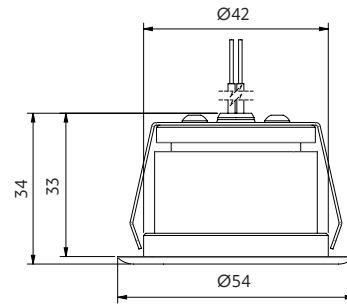


White
Aluminium



M-LIGHTZ Cabinet

- + provides practical illumination in cabinets & display areas
- + use for wardrobes, kitchen cabinets, storage areas
- + use indoors for feature lighting
- + IP67 front
- + constant current (Max 500mA)



Options

Beam angle



45°

CCT



2700K



3000K



4000K

CRI

Professional series (P) CRI 90

Trim colour



Natural Anodised Aluminium



Black Anodised Aluminium



White Aluminium



Matt Black Anodised Aluminium



Matt Bronze Anodised Aluminium

230VAC power supply – constant current included
500mA dimmable.

Contact Switch Lighting for Casambi Smart Control options.

Product information

Table is based on: 3000K

Contact Switch Lighting for data of other variants

Model	System power (W)	Luminaire power (W)	Forward voltage (V _f)	Delivered lumens (lm)	Insulation coverable		
					NZ	AU	UK/EU
SL901	6.25	5	9.5	400	IC-F	IC-4	✓



Size 54X33mm



Cut-out Ø44-46mm



Hole depth >40mm



Front

How to specify M-LIGHTZ Cabinet

Please confirm model option availability from our website.

e.g. code = [SL901-45-30-P-N](#)

Model	Beam	CCT	CRI	Trim Colour	Market
SL901	45 = 45°	27 = 2700K 30 = 3000K 40 = 4000K	P = 90	N = Natural Anodised Aluminium B = Black Anodised Aluminium W = White Aluminium MB = Matt Black Anodised Aluminium MZ = Matt Bronze Anodised Aluminium	1 = NZ 1 = Aust 2 = UK 3 = EU

Please see www.switch-lighting.co.nz for specifications, lux levels, SDoCs, ies files and installation instructions.



Warranty
5 Years

L70 (50,000 h)

