

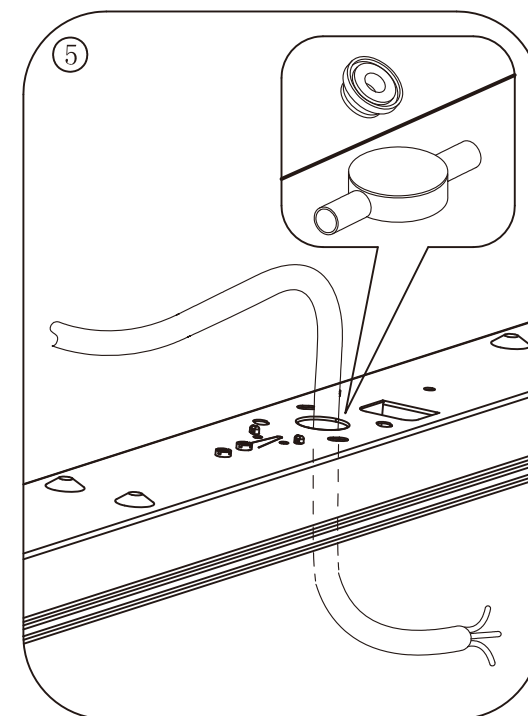
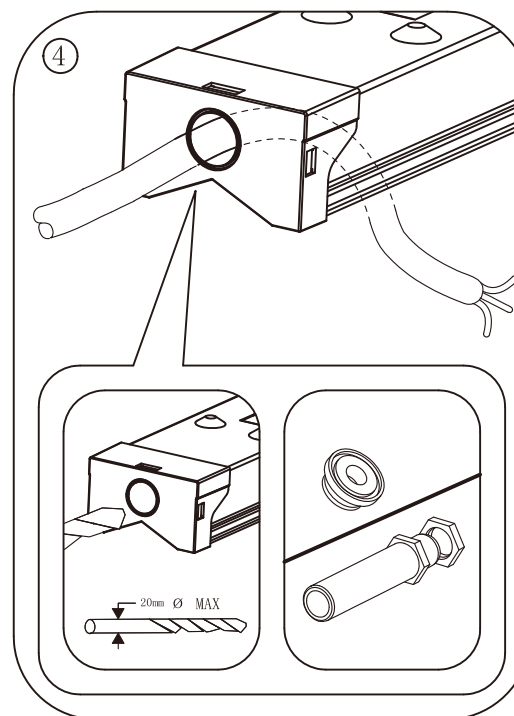
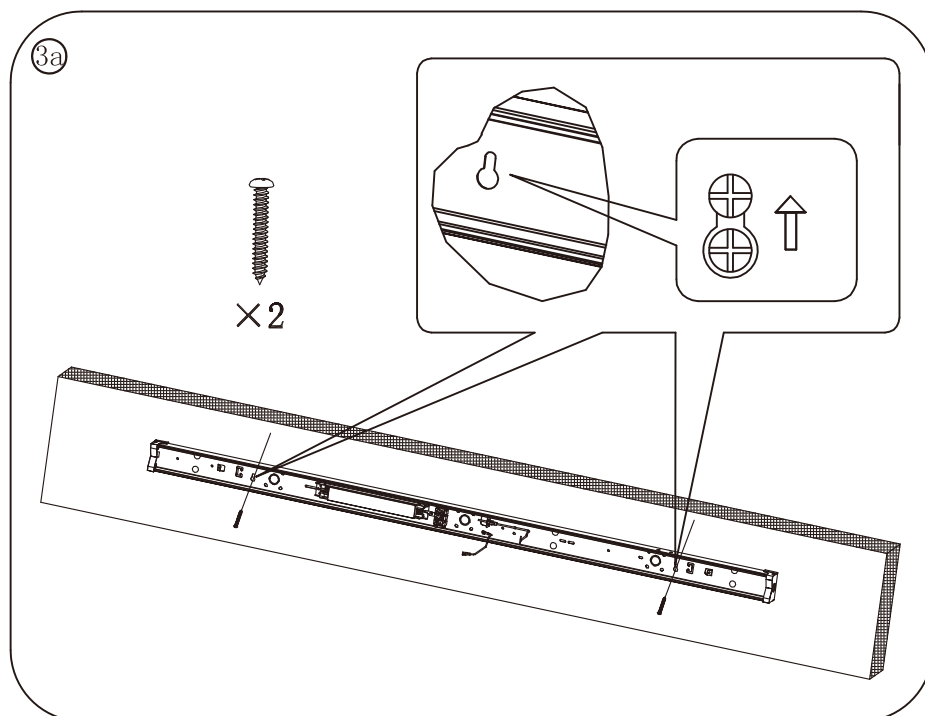
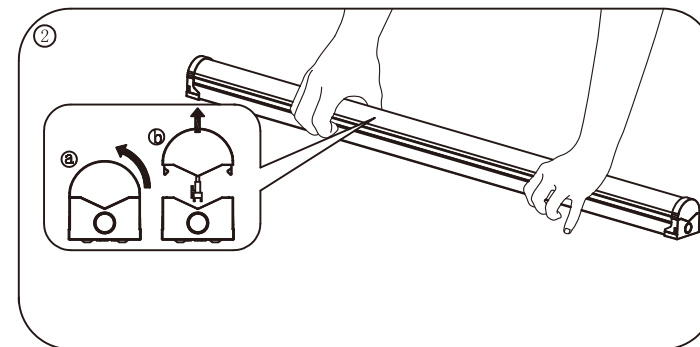
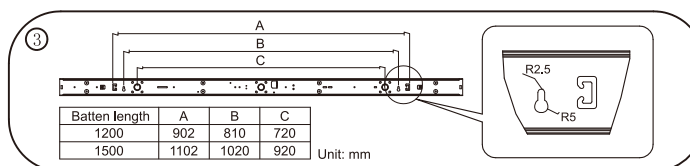
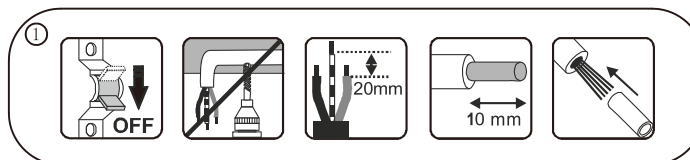
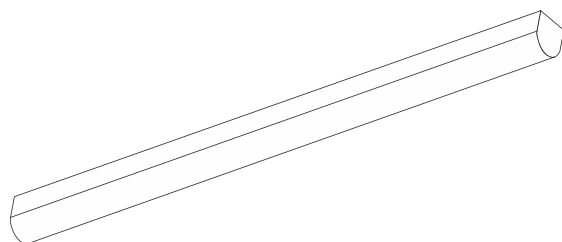
SLED

SLBN112-40-W / SLBN115-30-W /
SLBN115-40-W / SLBN115-65-W /
SLBN135-40-W / SLBN115-40-P-W /
SLBN115-50-P-W /

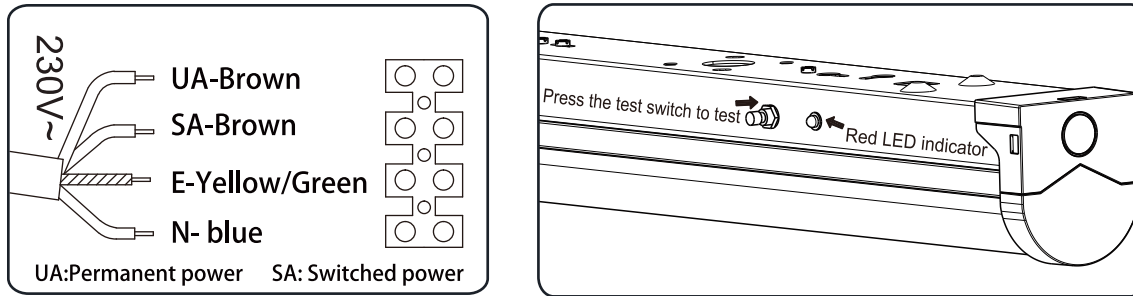
220V-240V
~50/60Hz



SLBN112-40-W	40W	4320lm	4000K	CRI>80	120x6.6x7.4cm	Non dimming
SLBN115-30-W	60W	6300lm	3000K	CRI>80	150x6.6x7.4cm	Non dimming
SLBN115-40-W	60W	6480lm	4000K	CRI>80	150x6.6x7.4cm	Non dimming
SLBN115-65-W	60W	6480lm	6500K	CRI>80	150x6.6x7.4cm	Non dimming
SLBN135-40-W	60W	6480lm	4000K	CRI>80	150x6.6x7.4cm	Emergency battery backup
SLBN115-40-P-W	60W	5700lm	4000K	CRI≥95	150x6.6x7.4cm	Non dimming
SLBN115-50-P-W	60W	5940lm	5000K	CRI≥95	150x6.6x7.4cm	Non dimming



Emergency battery backup version SLBN135-40-W instruction



Warning:

This light MUST be installed by a qualified electrical contractor ONLY

Ensure all supply circuits are disconnected before accessing electrical terminals

The bulb, lamp holder or shade may get hot when the light is operating, do not touch them to avoid a hazard.

To prevent damage to the appliance do not use alkaline cleaning agents when cleaning. Use a soft cloth and a mild detergent. Always switch off before cleaning.

Failure to maintain the light in a clean condition could lead to deterioration of the surface that could adversely affect the life of the appliance and possibly result in a hazardous situation

WARNING: FIRE RISK EXISTS IF THE LIGHT IS COVERED BY OR POSITIONED CLOSE TO CURTAINS OR OTHER COMBUSTIBLE MATERIALS

WARRANTY: 5 years for the light, 1 year for the battery